



# 蛋白質純化



- For His - Tag Protein
- For GST - Tag Protein
- For Immunoglobulin
- For Phosphoprotein
- For Glycoprotein

## For Phosphoprotein

**磷**酸化蛋白一直是研究者很感興趣卻又很頭痛的蛋白，即使表現量微乎其微卻仍有其功用，因此，若想研究這些磷酸化蛋白，必需先純化。Clontech 以 TALON 螯合技術，將兩價過渡金屬 coating 在 Resin 表面，以吸附原理純化磷酸化蛋白，兩種型式，磁珠或 Resin，尚有純化 Phosphopeptide 的產品，適合作為 MASS 樣品前處理。高度選擇性分離磷酸化蛋白或磷酸 Peptides。

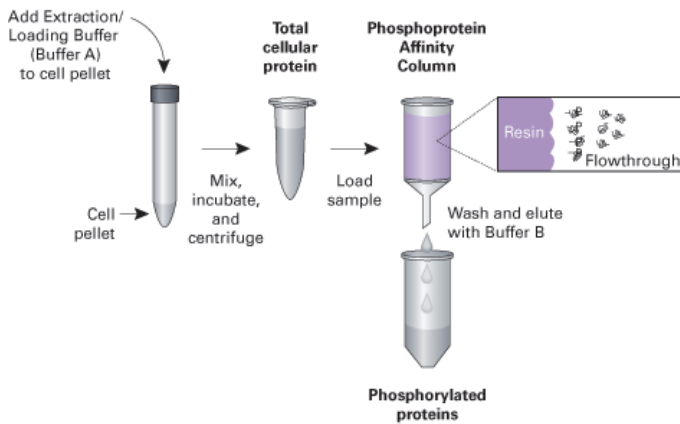
### TALON Phosphoprotein - Resin-based

- 流程簡單快速：只要 2 小時即可完成。
- Binding capacity 高：4mg/mL
- 適合各種 Phosphoprotein。
- 可純化膜蛋白及胞質蛋白。
- Non-denature 環境，確保蛋白活性。

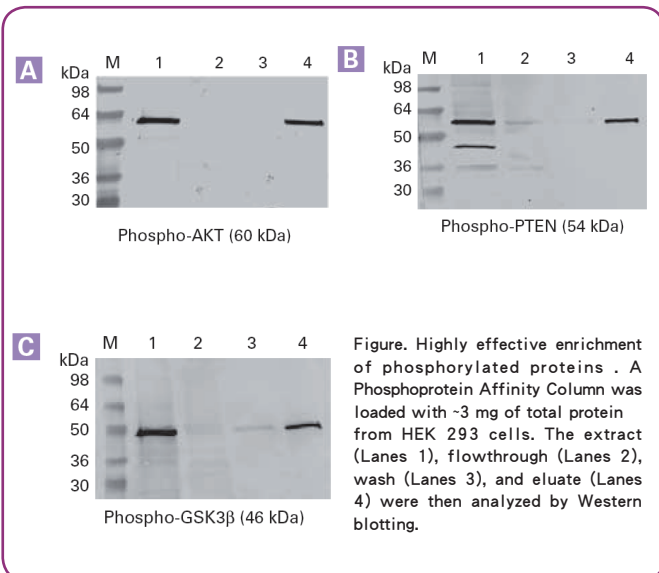
### TALON Phosphoprotein - Magnetic bead

- 流程簡單快速：1-2 小時內即可完成
- 用微量樣本。
- 可濃縮樣本於 50-200  $\mu$ L
- 高選擇性的純化 Phosphoprotein。
- 可純化膜蛋白及胞質蛋白。
- Non-denature 環境，確保蛋白活性。

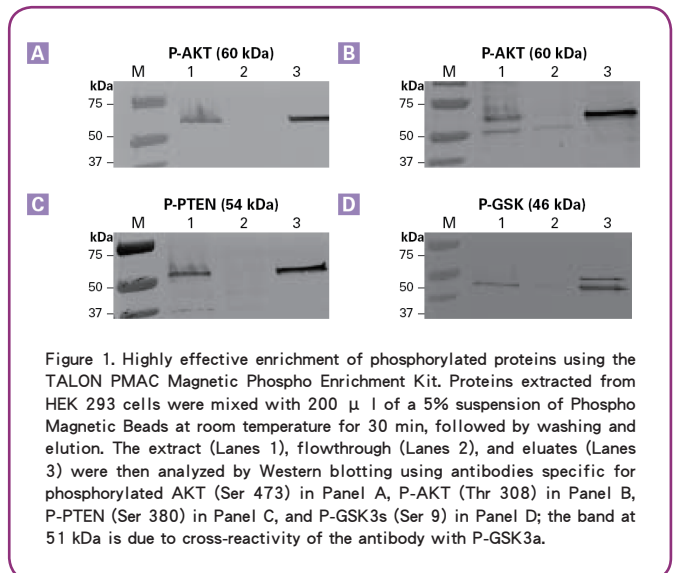
#### ▶ 流程簡圖



#### ▶ Typical Result



#### ▶ Typical Result



Cell Line	Protein Loaded (mg)	Flowthrough + Washes (mg)	Eluate (mg)	Percentage of Protein Eluted
HEK 293	0.192	0.146	0.034	18%
Jurkat	0.183	0.133	0.033	18%
COS	0.150	0.113	0.025	17%
NIH 3T3	0.176	0.132	0.027	15%
HeLa	0.174	0.139	0.023	13%

<sup>1</sup> 200  $\mu$ l of a 5% suspension of Phospho Magnetic Beads was used for each purification. Total protein in each fraction was determined with BCA Protein Assay Reagent (Pierce Biotechnology, Cat. No. 23225).



# 蛋白質純化

創意集點 GO

- For His - Tag Protein
- For GST - Tag Protein
- For Immunoglobulin
- For Phosphoprotein
- For Glycoprotein

## For Phosphopeptide

- 單管化流程，簡單快速：只要 30分鐘即可完成。
- Detergent-free buffer system
- Nanoscale : Sample 可回收於 20 uL 體積中
- 可純化膜蛋白及胞質蛋白。
- 與 MASS、LC 相容

### Typical Result

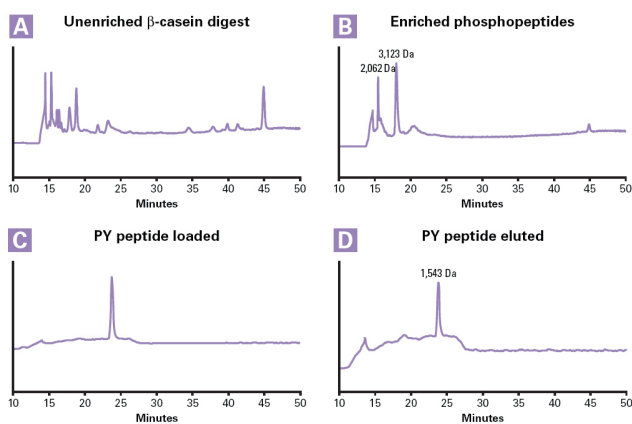
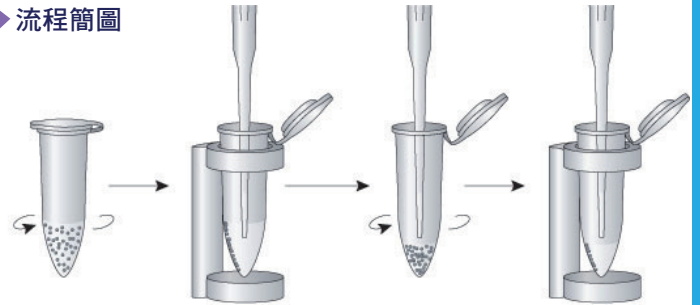


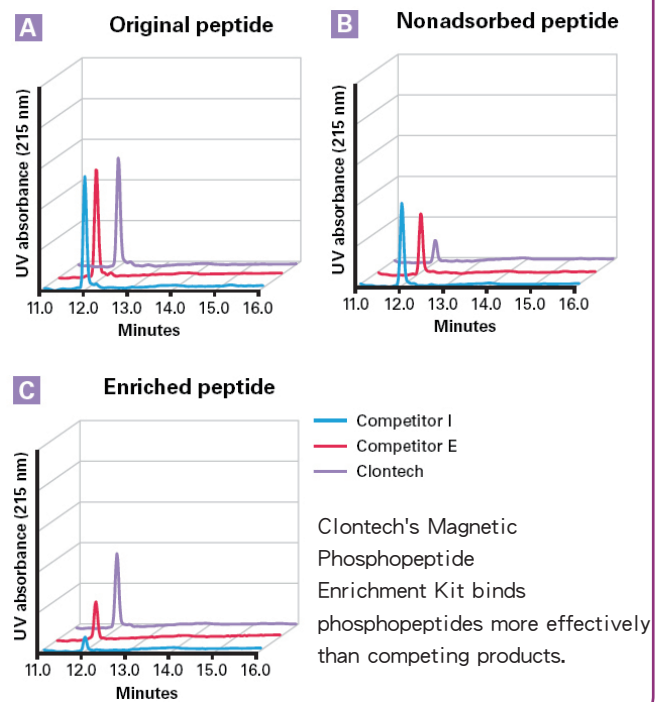
Figure. Phosphopeptide purification with Magnetic Phosphopeptide Enrichment Kit. scasein protein digested with immobilized trypsin was diluted with Binding/Wash Buffer and mixed with Phospho Magnetic Beads at room temperature for 10 min. After washing, the enriched fraction was eluted with Elution Buffer. Reverse phase HPLC analysis was performed on a Waters Breeze HPLC, XTerraR RP18 column with UV detection at 215 nm. Reverse phase HPLC data are shown for the crude protein digest in Panel A and for the eluate in Panel B. Synthetic pY peptide dissolved in Binding/Wash Buffer (Panel C) was mixed with Phospho Magnetic Beads. After washing, bound phosphopeptide was eluted with Elution Buffer (Panel D).

### 流程簡圖



Mix sample (diluted with Binding/Wash Buffer) with beads and incubate 10 min at RT  
 Wash 3 times with Binding Wash Buffer to remove nonadsorbed peptides  
 Add Elution Buffer and mix  
 Collect eluate

### Comparison with Competitors



Clontech's Magnetic Phosphopeptide Enrichment Kit binds phosphopeptides more effectively than competing products.

## 磷酸化蛋白純化產品簡介

Clontech	Phosphoprotein & phosphopeptide purification kit			
貨號	635624	635634	635641	635643
固相支撐	Resin	Resin	Magnetic Bead	Magnetic Bead
純化方式	Gravity	Spin column	Magnet	Magnet
Prepackaged	Yes	Yes	No	No
Package	6 X 1 ml	25 col	2 x 1 mL	2 x 1 mL
Sample source	Cell Lysate or Tissue	Digestive Sample	Cell Lysate or Tissue	Digestive Sample
Capacity	4 mg / ml	250 ug/ column	400 ug/ ml	5-10 umol phosphate/100 ul beads
Elution volumn	approx. 2 ml	300 ul	50-200 ul	25 ul
other required	no	635635 (buffer kit)	磁座	磁座
備註	適用 Native purification	Denaturing condition	適用 Native purification	Denaturing condition
特價	\$12,668.	\$12,164.	\$16,800.	\$11,567.

■ 此系列商品不建議重覆使用