



# 蛋白質純化



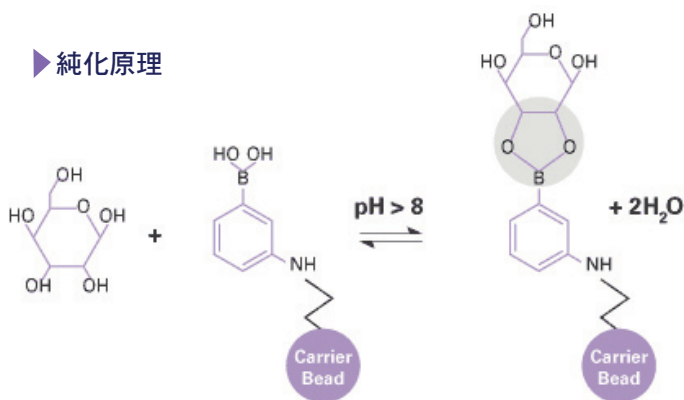
- For His - Tag Protein
- For GST - Tag Protein
- For Immunoglobulin
- For Phosphoprotein
- For Glycoprotein

## For Glycoprotein

**糖**基化蛋白在生物學上扮演的角色不亞於磷酸化蛋白，舉凡抗體、接受器等蛋白都需經過糖基化作用才能有正常的功能，Clontech 推出的 Glycoprotein enrichment resin, 利用 Phenylboronic acid-based resin, 可抓住廣泛的糖基化蛋白。除了重力引流之外，也可應用於 FPLC 上。整個流程更只要 90 分鐘，是您進行簡化樣品複雜性的好方法。

- 適用重力分離
- 適用 FPLC
- 只要 90 分鐘
- 專一性高
- 結合強，較少 Leakage
- 適用於廣泛糖蛋白

### 純化原理



Phenylboronic acid 在 pH>8 時會和糖基上的順式二醇 (cisdiol) 形成可逆的環狀化合物 (Binding)，而在低 pH 值或加入競爭劑 (Sorbitol) 的狀況下，糖基化蛋白可自 Resin 上脫離 (Elution)。

### High specificity

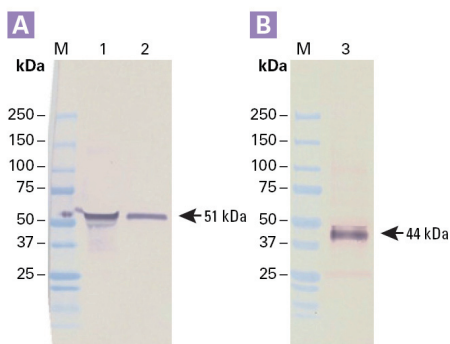
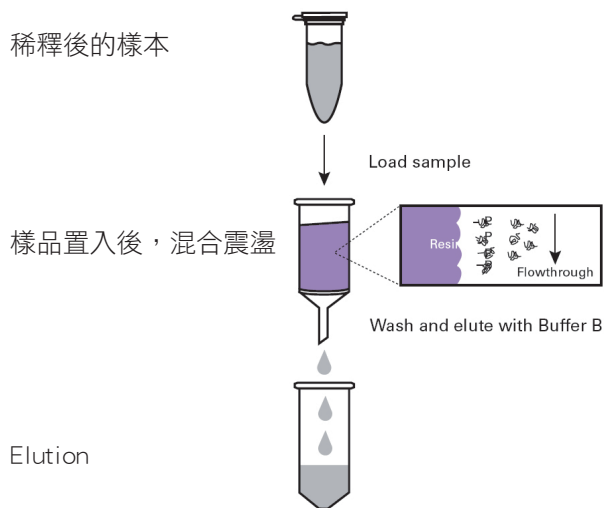


Figure. Glycoprotein Enrichment Resin enriches specific serum glycoproteins. Enriched fractions from the column containing Clontech's Glycoprotein Enrichment Resin were analyzed by Western blotting with antibodies for two specific serum glycoproteins, alpha-1 acid glycoprotein (Panel A) and alpha-1 antitrypsin (Panel B). Lane 1: human serum. Lane 2: eluted fraction. Lane 3: eluted fraction.

### 簡單的流程 ~ 90分鐘內完成



### Comparison with competitor S

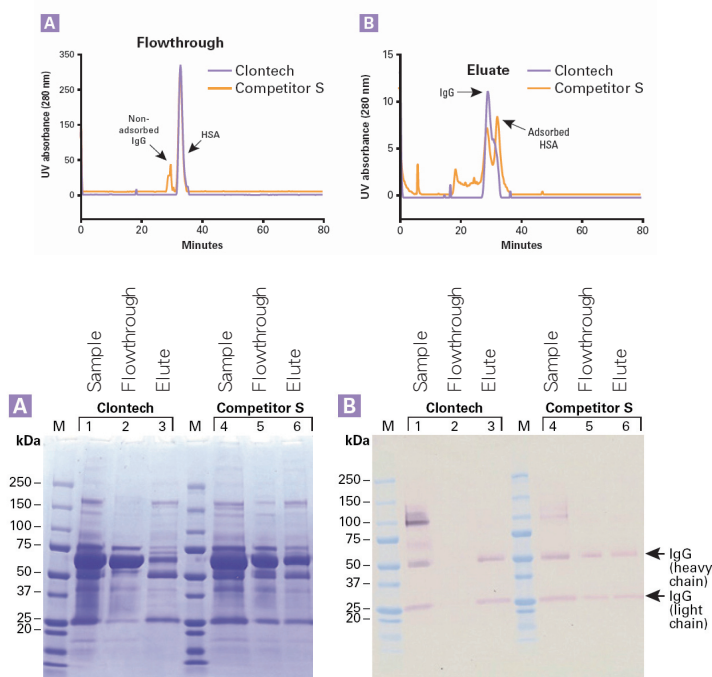


Figure. Clontech's Glycoprotein Enrichment Resin demonstrates more effective glycoprotein enrichment than a competitor's resin. Panel A. FPLC result, Panel B. SDS-PAGE, Panel C. Western Blot.

新品特賣！  
點數Double!

貨號	產品	包裝	特價
635647	Glycoprotein Enrichment Resin	10 ml	8,885.