

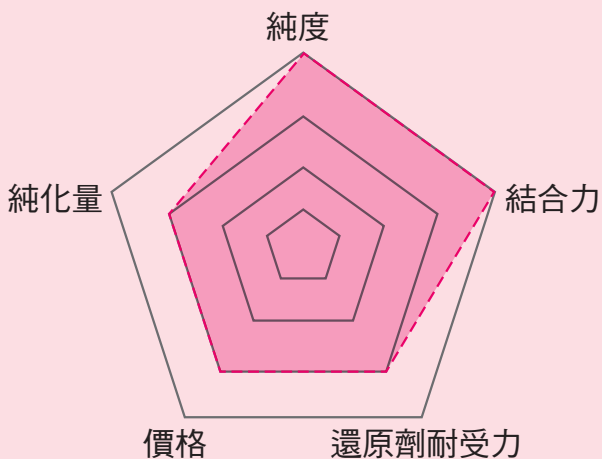
どっち〜
純化 東西軍
大PK



東軍

Talon Co

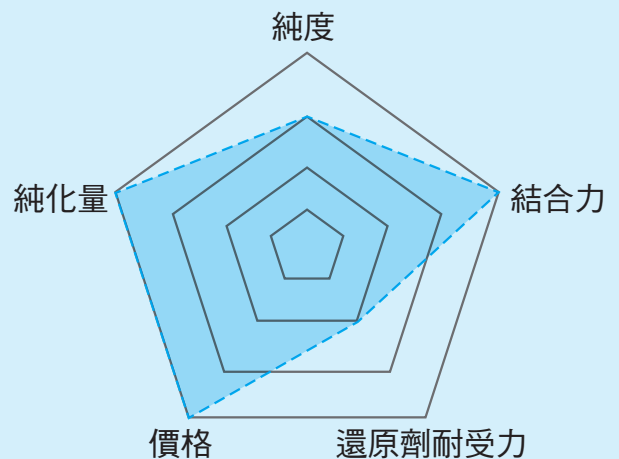
戦力分析



西軍

His60 Ni

戦力分析



- 獨家 TALON Chelating 方式，與鈷離子結合率高，Leakage 最低
- 鈷離子與 His-tagged 蛋白專一性比鎳高
- 純度高，最少非特異性結合下的產物。
- 還原劑耐受力佳
- 合適 Native purification

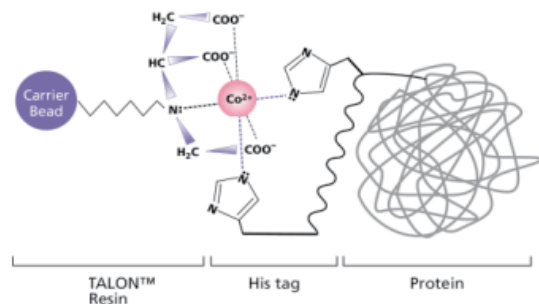
最適合▶

- Crystallography
- Functional Assay
- Structural investigation

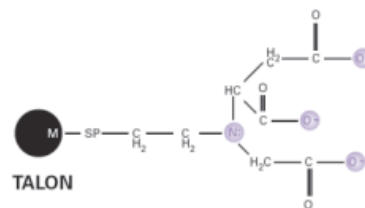
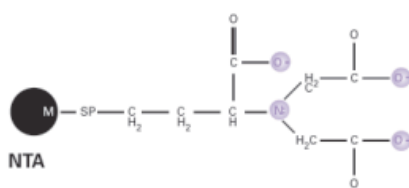


Mechanism of Talon™ Resin

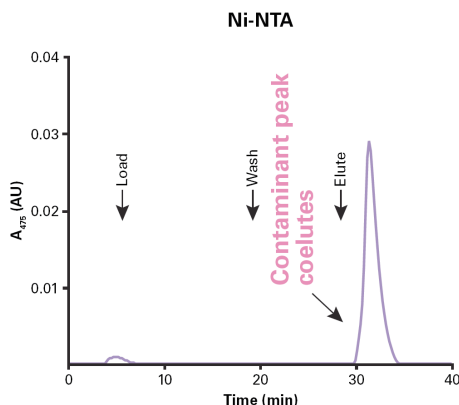
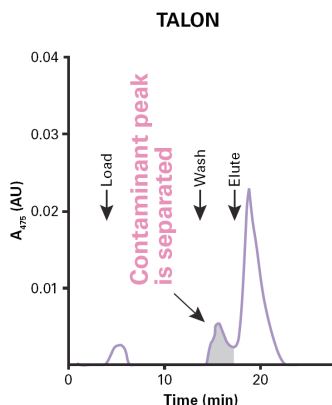
TALON™ Resin 本身的結構為「3D立體式」，具有四個如齒狀之 Ligand 緊緊結合鉗住金屬鈷離子，使得純化過程中不會有金屬離子滲透現象。而其他用來結合鎳離子的 Resin 都是平面式的結構，以致於和鎳金屬離子的結合不緊密最後導致金屬離子伴隨著欲純化之蛋白一起流洗出，影響了蛋白質之功能及活性。TALON™ Resin 使用鈷離子，因此與 His-tagged proteins 結合之專一性更高。不論在濃度 2-ME 或各種變性環境中，TALON™ 皆相當穩定。



Two common chelating ligands used in MACS



TALON 能專一結合 His-tagged 蛋白



IMAC purification—TALON vs. Ni-NTA. 6xHN-AcGFP1 was purified from Sf21 cells using TALON or Ni-NTA. The chromatogram for each column is shown. The absorbance at 475 nm indicates the amount of target protein (AcGFP1) present in each fraction.

Clontech His60 Ni Superflow Resin

- 獨家 Chelating 方式，將 leakage 減至最低
- 市面上最高的 binding capacity ~60 mg/ml
- 還原劑耐受力更佳
- 適用 FPLC/ Gravity
- 經濟實惠



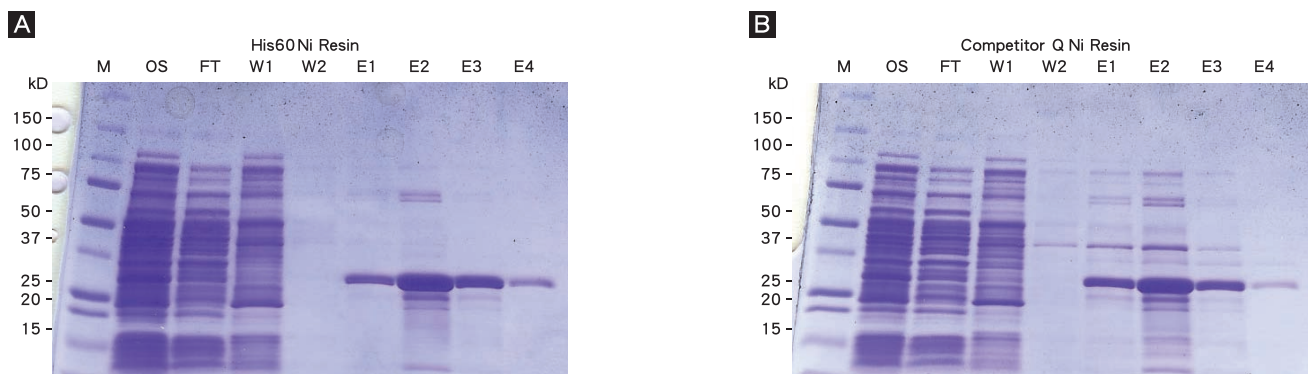
最適合▶

- Protein labeling
- Immunization to produce antibodies
- Animal Studies

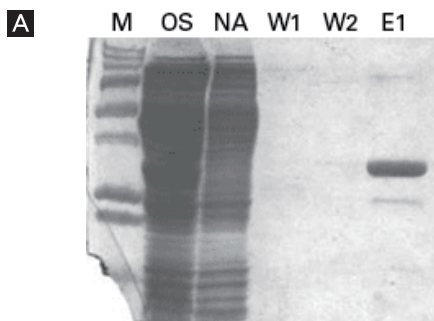
Table I: Reagents Compatible with His60 Ni Superflow Resin

Denaturants	Detergents	Reducing Agents	Others	Salts
6 M Gu-HCl 6 M Urea	2% Triton X-100 2% Tween 20 1% CHAPS	20 mM βME 10 mM DTT	20% glycerol 20% ethanol	4 M MgCl ₂ 5 mM CaCl ₂

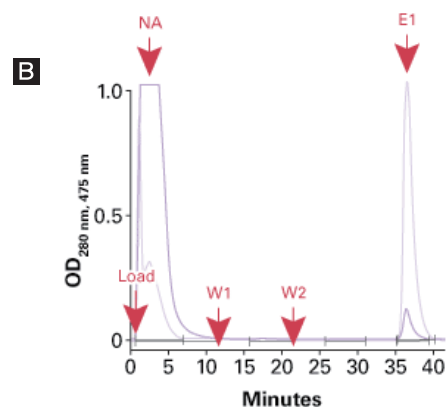
His60 與傳統 Ni-NTA 的差異



Superior yields and better purity were obtained when using His60 Ni Superflow for purification as compared to Competitor Q's Ni resin. Clontech's pEcoli Linear Expression System was used to express 6xHN-AcGFP1 in *E. coli*. Equivalent amounts of the same sample were used for comparing His60 Ni Superflow Resin purification (Panel A) with Competitor Q Ni Resin purification (Panel B). Lane M: Molecular weight marker. Lane OS: Original sample. Lane FT: Flowthrough. Lanes W1 and W2: Wash. Lane E1-E4: Eluted 6xHN-AcGFP1 fractions.



A. SDS-PAGE gel analysis of eluate fractions
M: Marker proteins OS: Original sample NA: Nonadsorbed fraction W1: Wash 1 (wash buffer containing 40 mM imidazole) W2: Wash 2 (wash buffer containing 60 mM imidazole) E1: Elution (elution buffer containing 300 mM imidazole)



B. Absorbance at 280 nm/475 nm: imidazole contributes to A280
Load: Loading buffer containing 20 mM imidazole, pH 7.4 W1: Wash buffer containing 40 mM imidazole W2: Wash buffer containing 60 mM imidazole E1: Elution buffer containing 300 mM imidazole

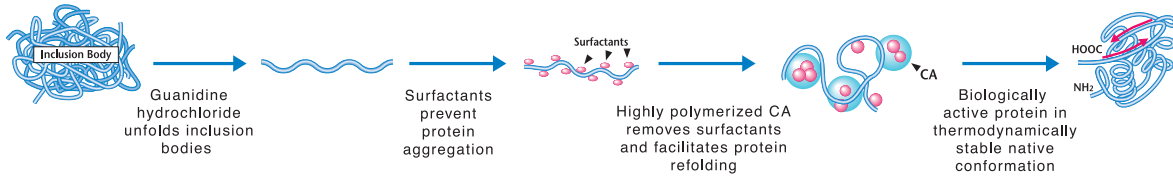
Step gradient elution* results using His60 Ni Superflow Resin.

* Step gradients are recommended over linear gradients for better resolution and sharper elution peaks when eluting from His60 Ni Superflow resin.

祕密武器 1

TakaRa Refolding CA Kit (#TAK 7350)

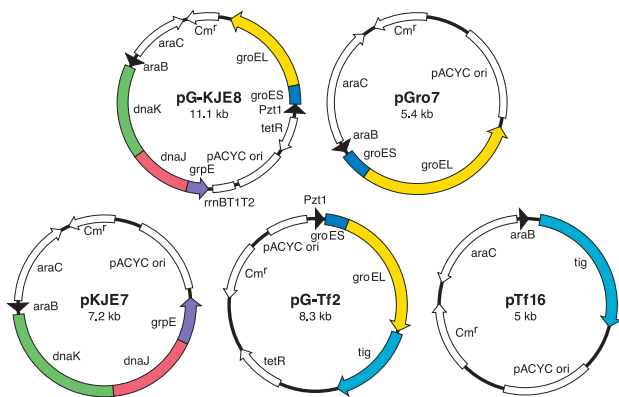
- 全新技術：使用人工 Chaperone 蛋白，Cycloamylose (CA) 協助蛋白 refolding
- 回收的蛋白，水溶性高且不失活性
- 2-step protocol



祕密武器 2

TakaRa Chaperone Plasmid Set (#TAK 3340)

- 5 plasmid set，大量表現 chaperone teams
- 每個 plasmid 皆可 co-express 目標蛋白
- 增加蛋白純化回收量
- 增加蛋白溶解度及維持活性



不管你選誰，通通都有送

1. 滿1000 現折100

2. 加購祕密武器再送 GeneTex 6xHis Ab 一支 (25 ul，#GTX115045S)

TALON Co Resin		
Description	Package	Catalog No
TALON Metal Affinity	10 ml	635501
	25 ml	635502
	100 ml	635503
TALON Superflow Metal Affinity Resin	250 ml	635504
	2 x 250 ml	635652
	4 x 250 ml	635653
	25 ml	635506
TALON CellThru	100 ml	635507
	250 ml	635670
	2 x 250 ml	635669
	4 x 250 ml	635668
TALON CellThru	10 ml	635509
TALON Megnetic Beads	2 X 1 ml	635636
	6 x 1 ml	635637

TALON Prepacked		
TALON Cartridge	5 cartridges	635650
TALON Cartridge Purification Kit	20 purifications (5 cartridges)	635649
HisTALON Gravity Column	5 columns	635655
HisTALON Gravity Purification Kit	20 purifications (5 cartridges)	635654
TALON Spin columns	10 columns	635601
	25 columns	635602
	50 columns	635603
TALON Single Step Column (5 ml)	2 columns	635631
TALON Single Step Column (20 ml)	25 columns	635628
TALON Single Step Column (20 ml)	10 columns	635632
His60 Ni Superflow		
His60 Ni Superflow™ Resin	10 ml	635659
	25 ml	635660
	250 ml	635662
Superflow™ Resin	4 x 25 ml	635661
	2 x 250 ml	635663
	4 x 250 ml	635664
His60 Ni Gravity Columns	5 columns	635657
His60 Ni Buffer Set	20 purifications	635665
His60 Ni Gravity Column Purification Kit	20 purifications	635658