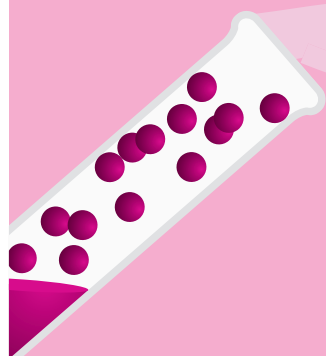


# PureProteome Albumin Magnetic Beads

## 樣品製備的好幫手

聯手出擊 天下無敵



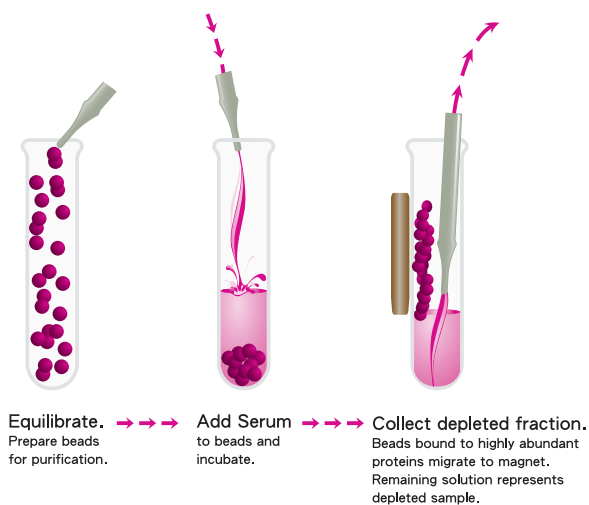
PureProteome  
Magnetic Beads



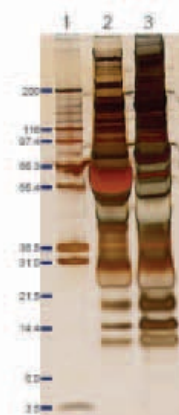
Amicon Ultra  
Centrifugal Filters

- 純度高：能夠去除 >98% 以上的 Albumin 和 IgG。
- 專一性高：磁珠表面以 Polymeric 處理，防止非專一性的物質鍵結。
- 經濟實惠：有多少樣品就用多少的磁珠，不多浪費您的樣品，價錢只有其它廠牌的一半。
- 回收率高：使用磁珠系統，樣品緊靠管壁，吸取時不用擔心樣品的流失。
- 低背景值：比傳統方法清洗更容易，有效的去除非專一性的蛋白鍵結。

### 操作流程



### 有效去除 Albumin 及 IgG

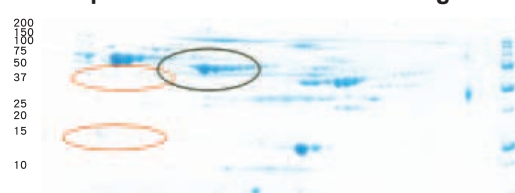


Removal of Human Serum Albumin (HSA) from Serum. Proteins were resolved on 4-12% SDS-PAGE gel and silver stained. Human serum (25 µL) was depleted of albumin following the protocol described for the PureProteome Albumin Magnetic Beads. Lane 1, molecular weight markers; lane 2, human serum (30 µg total protein); lane 3, human serum after depletion (30 µg total protein).

### (A) Before depletion:

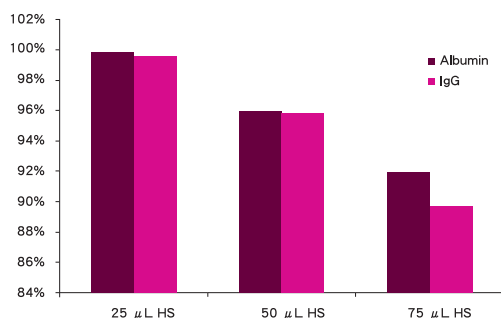


### (B) After depletion with PureProteome magnetic beads



Human serum (100 µg total protein) was analyzed before serum depletion (A), after depletion with PureProteome Albumin/IgG depletion kit (B). Serum proteins were resolved by isoelectric focusing (pH 4-7) in the first dimension and 8-16% SDS-PAGE in the second dimension and visualized with Coomassie blue staining.

### Albumin 及 IgG 去除效果佳

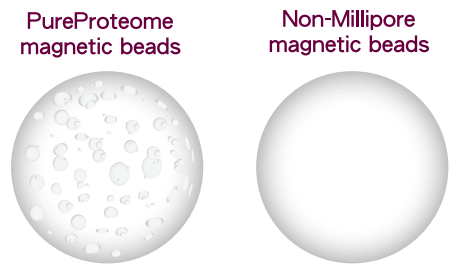
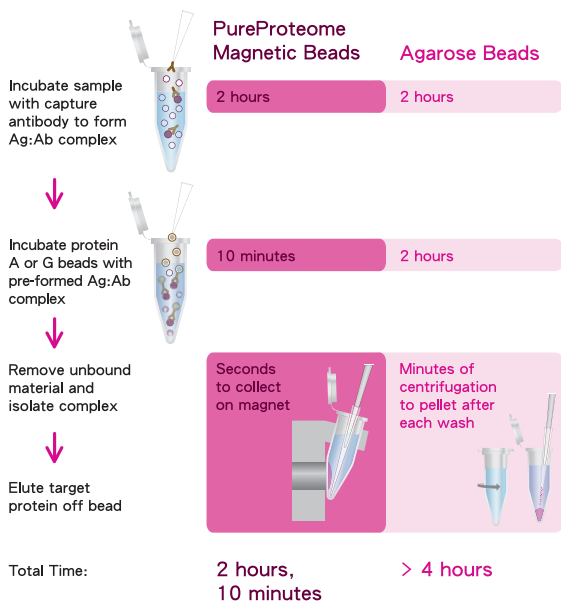


Albumin/IgG % depletion. Increasing amounts of human serum (HS) were mixed with a fixed amount of Albumin/IgG depletion beads (950 µL of slurry or 170 µL of settled beads). The pre- and post-depleted samples were assayed by ELISA to calculate the percent depletion of both HSA and IgG.

# PureProteome Magnetic System

## 輕鬆吸取 樣品不流失

- 快速：短時間內完成實驗 ( 比傳統方法節省約一半的時間 )。
- 專一性高：磁珠表面以 **Polymeric** 處理，防止非專一性的物質鍵結。
- 高 binding capacity：
  - protein A 磁珠：可以結合 1.5-2.5 ug/ul protein。
  - protein G 磁珠：可以結合 2.5-3.5 ug/ul protein。
  - Nicokel 磁珠：可以結合 5 mg/ml protein。
- 經濟實惠：有多少樣品就用多少的磁珠，不多浪費您的樣品，價錢只有其它廠牌的一半。
- 回收率高：使用磁珠系統，樣品緊靠管壁，吸取時不用擔心樣品的流失。
- 低背景值：比使用 **Agarose** 方式進行 IP 清洗更容易，有效的去除非專一性的蛋白鍵結。



## 歡慶新品上市

全系列產品

買小包裝 加購 NT 2,000 送  
超好用雙色 sample Loading buffer (Cat No. 193861)

買大包裝 免費送  
超好用雙色 sample Loading buffer (Cat No. 193861)

## Protein A & G 選擇表

|           | Human λ | Human κ | Human Fc | Human ScFv | Human F(ab') <sub>2</sub> | Human Fab | chicken IgG | Pig IgG | Goat IgG | Sheep IgG | Bovine IgG | Guinea Pig IgG | Hamster IgG | Rabbit IgG | Rat IgM | Rat IgG2c | Rat IgG2b | Rat IgG2a | Rat IgG <sub>1</sub> | Rat IgG | Mouse IgM | Mouse IgG <sub>3</sub> | Mouse IgG <sub>2b</sub> | Mouse IgG <sub>2a</sub> | Mouse IgG <sub>1</sub> | Human IgM | Human IgE | Human IgD | Human IgA | Human IgG <sub>4</sub> | Human IgG <sub>3</sub> | Human IgG <sub>2</sub> | Human IgG <sub>1</sub> |   |
|-----------|---------|---------|----------|------------|---------------------------|-----------|-------------|---------|----------|-----------|------------|----------------|-------------|------------|---------|-----------|-----------|-----------|----------------------|---------|-----------|------------------------|-------------------------|-------------------------|------------------------|-----------|-----------|-----------|-----------|------------------------|------------------------|------------------------|------------------------|---|
| Protein A | x       | x       | ○        | ○          | ○                         | ○         | x           | ●       | ▲        | ▲         | ○          | ●              | ○           | ●          | ▲       | ▲         | ▲         | ▲         | ▲                    | ●       | ▲         | ○                      | ●                       | ●                       | ○                      | ○         | ○         | ○         | ○         | ○                      | ○                      | ○                      | ○                      | ○ |
| Protein G | x       | x       | ○        | x          | ○                         | ○         | ▲           | ●       | ○        | ○         | ○          | ○              | ●           | ●          | x       | ○         | ○         | ○         | ○                    | ●       | x         | ●                      | ●                       | ●                       | ○                      | x         | x         | x         | x         | ●                      | ●                      | ●                      | ●                      |   |

● Strong affinity    ○ Moderate/slight affinity    ▲ Requires evaluation    X No affinity

| Detection         | Item Number | Item Description  | Package |
|-------------------|-------------|---|---------|
| Protein A         | LSKMAGA02   | PureProteome™ Protein A Magnetic Bead System  | 2 x 1ml |
|                   | LSKMAGA10   | PureProteome™ Protein A Magnetic Bead System  | 10mL    |
| ProteinG          | LSKMAGG02   | PureProteome™ Protein G Magnetic Bead System  | 2 x 1ml |
|                   | LSKMAGG10   | PureProteome™ Protein G Magnetic Bead System  | 10mL    |
| Nicokel           | LSKMAGH02   | PureProteome™ Nickel Magnetic Bead System   | 2 x 1ml |
|                   | LSKMAGH10   | PureProteome™ Nickel Magnetic Bead System   | 10mL    |
| Albumin depletion | LSKMAGD12   | PureProteome Albumin/IgG Depletion Kit<br>Includes:<br>• PureProteome Albumin/IgG beads, 12 mL<br>• 10X Phosphate Buffered Saline (PBS) wash and bind buffer, 7 mL<br>• Amicon Ultra-4 3K Centrifugal Filter, 8pk | 1 kit   |
|                   | LSKMAGL10   | PureProteome Albumin Magnetic Beads   | 10mL    |
|                   | 20-400      | Magna GriP™ Rack (8 well)   | 1 ea    |
| Rack              | LSKMAGS08   | PureProteome Magnetic Stand, 8 well x2 ml   | 1 ea    |
|                   | LSKMAGS15   | PureProteome Magnetic Stand, 15 mLx2  | 1 ea    |