

Western Blotting Kits



- Sensitive • Accurate • 100% Guaranteed

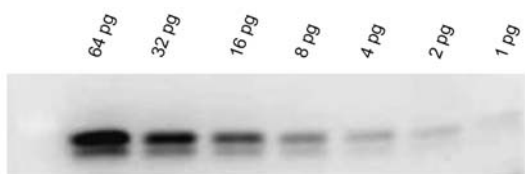
Mouse Primary Antibody Western Blot Kit

Part Number KCA002
1 Kit

Rabbit Primary Antibody Western Blot Kit

Part Number KCA003
1 Kit

Chemiluminescent HRP Western Blot kit uses ECL luminol substrate. Western Blot kit can process up to 30 mini blots



Chemiluminescent Western Blot Kit shows super sensitive signal. Example: Known amounts of GST were spiked into a HeLa lysate followed by separation by SDS-PAGE using a 4-20 % gradient gel. Proteins were transferred to a Protran B85 membrane for 1 hour at 100 mV. The membrane was blocked with 5% BLOTTO (p/n B501-0500) in TTBS for 1 h at 4 °C. The blot was probed for 40 min with 1:1,000 dilution of Mab anti-GST (p/n 200-301-200) followed by HRP Secondary Antibody.



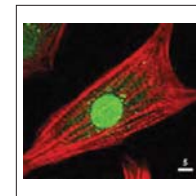
Detection Kits

DYKDDDDK (FLAG) Immunoprecipitation Kit	KBA-319-383	50 x 20µl reaction	1 Kit
DYKDDDDK (FLAG) Western Blotting Kit	KCA383	30 Blots	1 Kit
Fluorescent Multiplex Odyssey Western Blotting Kit	KFA012	25 Blots	1 Kit
GFP Western Blotting Kit	KCA215	30 Blots	1 Kit
RFP Western Blotting Kit	KCA379	30 Blots	1 Kit
Immunohistochemistry Kit for Mouse Primary Antibodies	KHA002	150 Stains	1 Kit
Immunohistochemistry Kit for Rabbit Primary Antibodies	KHA003	150 Stains	1 Kit

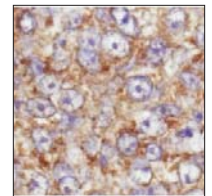
Primary Antibodies

Founded in 1962, Rockland manufactures over 5,000 Antibodies and Antibody Based Tools in its laboratories near Philadelphia, PA. Antibodies are in the areas of Apoptosis, Cell Signaling, Cytokines, Notch Signaling, NFκB Pathway, PI3 Kinase Pathway, Ubiquitin & UBL Proteins.

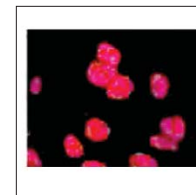
PRODUCT NAME	HOST	APPLICATIONS	CAT. NO.	SIZE
Anti-AKT pan	(Rabbit)	IHC, IF, WB, IP, E	100-401-401	200 µl
Anti-AKT Phospho pS473	(Mouse Mab)	IHC, IF, WB, IP, E	200-301-268	100 µg
Anti-Angiopoietin 1	(Rabbit)	WB, IP, E	100-401-403	200 µl
Anti-ATM Protein Kinase pS1981	(Mouse Mab)	IHC, IF, WB, IP, E	200-301-400	100 µg
Anti-Beta Amyloid	(Rabbit)	IHC, IF, WB, E	600-401-253	100 µg
Anti-COX 2	(Rabbit)	WB, IP, E	100-401-226	100 µl
Anti-CREB-1 (p43)	(Rabbit)	WB, IP, E	100-401-195	100 µl
Anti-Dab1 (400-555)	(Rabbit)	IHC, WB, IP, E	100-401-225	100 µl
Anti-DELTA-4	(Rabbit)	IHC, WB, IP, E	600-401-696	100 µg
Anti-Gli1	(Rabbit)	WB, IP, E	100-401-223	100 µl
Anti-Heat Shock Protein 27 (HSP27)	(Mouse Mab)	IHC, WB, IP, E	200-301-243	100 µg
Anti-hTERT	(Rabbit)	IHC, IF, WB, IP, E	600-401-252	100 µg
Anti-Interleukin 6 (IL-6)	(Rabbit)	IHC, IF, WB, IP, E, RIA, N	109-401-310	1 ml
Anti-Jagged-1	(Rabbit)	IHC, IF, WB, IP, E	200-401-698	500 µg
Anti-Mcl 1	(Rabbit)	WB, IP, E	600-401-394	100 µg
Anti-Myosin pS19/pS20	(Rabbit)	IHC, IF, WB, IP, E	600-401-416	100 µg
Anti-Nestin	(Rabbit)	WB, IP, E	600-401-417	100 µg
Anti-NFKB p65 (Rel A)	(Rabbit)	WB, GS, IP, E	100-4165	100 µl
Anti-NOTCH 1 (Cleaved N terminal)	(Rabbit)	WB, IP, E	100-401-407	200 µl
Anti-Osteopontin	(Rabbit)	IHC, WB, IP, E	100-401-404	200 µl
Anti-Ovalbumin	(Rabbit)	IHC, WB, IP, E	200-4133	50 mg
Anti-Pdcd4 (Programmed Cell Death 4)	(Rabbit)	IHC, WB, IP, E	600-401-965	100 µg
Anti-PPAR alpha (N-terminal specific)	(Rabbit)	WB, IP, E	600-401-421	100 µg
Anti-SMAD3 pS423 / pS425	(Rabbit)	IHC, WB, IP, E	600-401-919	100 µg
Anti-SUMO Yeast	(Rabbit)	IHC, WB, IP, E	200-401-428	500 µg
Anti-TNF alpha	(Rabbit)	IHC, WB, IP, E	210-401-321	1 mg



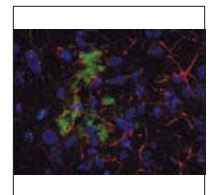
Rb anti-AKT



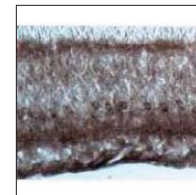
Rb anti-AKT pS473



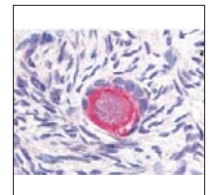
Ms anti-ATM pS1981



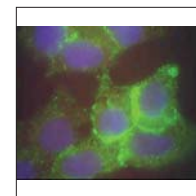
Rb anti-Beta Amyloid



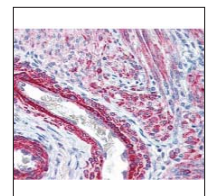
Rb anti-Dab1



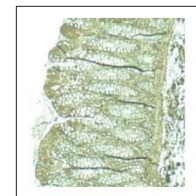
Rb anti-DELTA4



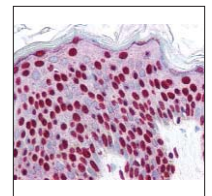
Rb anti-Jagged-1



Rb anti-myosin pS19/20



Rb anti-Pdcd4



Rb anti-Smad3 pS423/425



CELL SIGNALING • APOPTOSIS • CANCER RESEARCH • CHROMATIN
• NEUROSCIENCE • UBIQUITIN • SECONDARY ANTIBODIES • EPI TOPE TAGS

Australia
Jomar Bioscience PTY LTD
Phone: (08) 8431 2041
jomar@adelaide.on.net
www.jomar.on.net

Finland
Nuppulinan Laboratoriopalvelu Oy
Phone: 0207920350
nuppulinna@dlc.fi
www.nuppulinanlaboratoriopalvelu.fi

Taiwan
Unimed Healthcare Inc.
Phone: +886-2-27202215
sales@unimed.com.tw
www.unimed.com.tw

Korea
BMS Bio-Medical Science Co.,Ltd.
Phone: (82) 2 3471 6500
info@bmskorea.co.kr
www.bmskorea.co.kr

China
Dakewe Biotech CO., LTD
Phone: 86 010 5208 6640
info@dakewe.net
www.dakewe.net