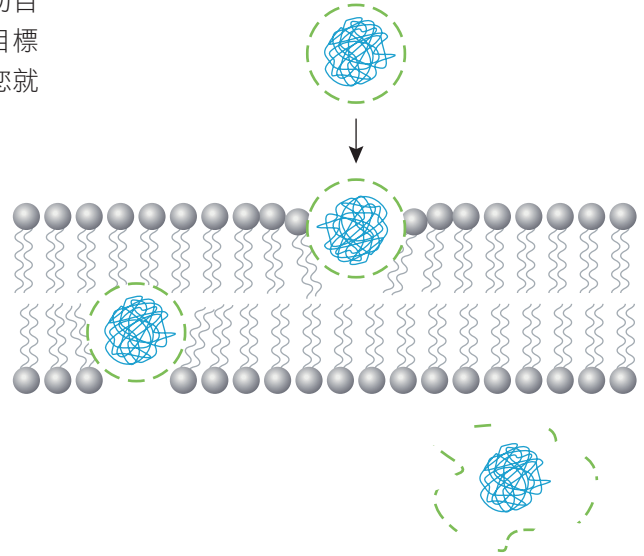


Xfect™ Protein Transfection Reagent

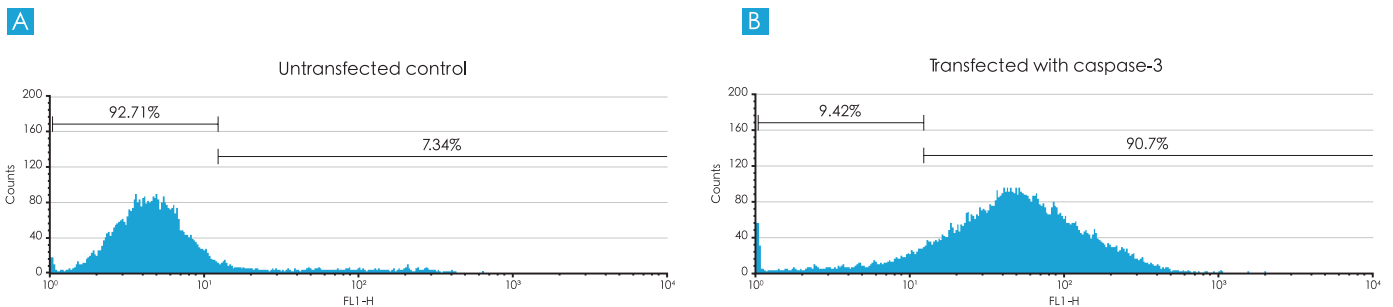
Xfect Protein 轉染試劑是一種修飾化胜肽，其特殊的氨基酸組成使它能夠與目標蛋白相互作用，而胜肽本身可穿透細胞膜，所以能協助目標蛋白跨越細胞膜屏障進入細胞內。使用方法極為簡單，只要將目標蛋白與 Xfect Protein 混合 30 分鐘後，再與細胞混合 2 小時後，您就可以測定蛋白質活性

Xfect Protein Transfection Reagent
(cell-penetrating peptide)



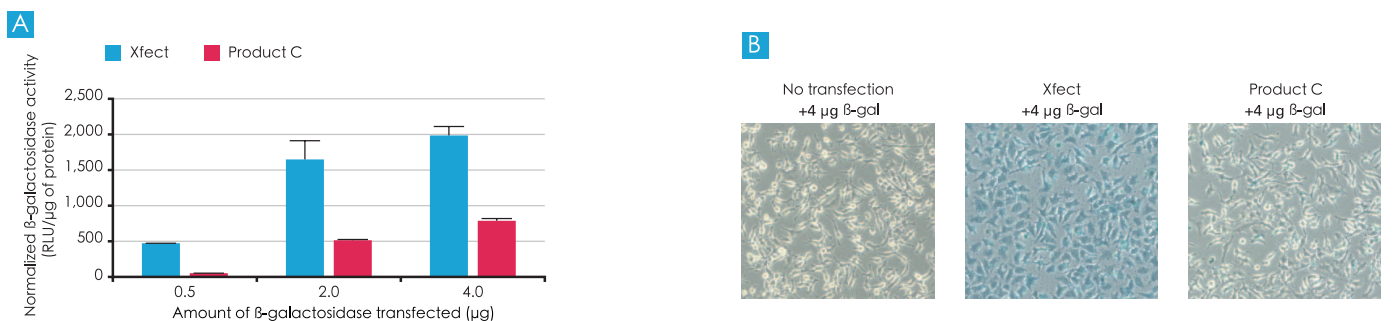
1. 能大量轉染活性蛋白
2. 非 lipofection，超低毒性
3. 蛋白質轉染效率高，就連難搞的幹細胞或血液細胞也難不倒
4. 超簡單的操作流程，2 小時就能進行分析

成功運送 Caspase-3 至細胞，並成功誘發細胞凋亡



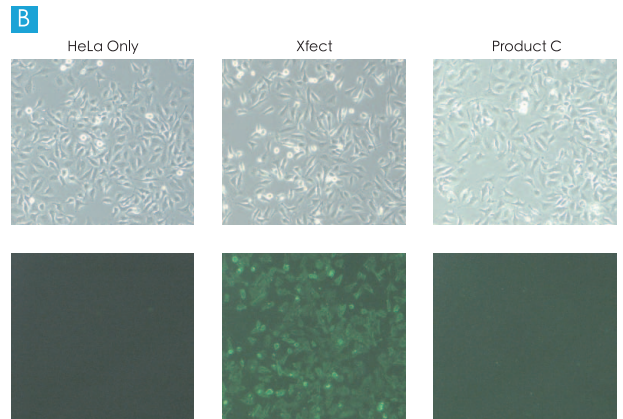
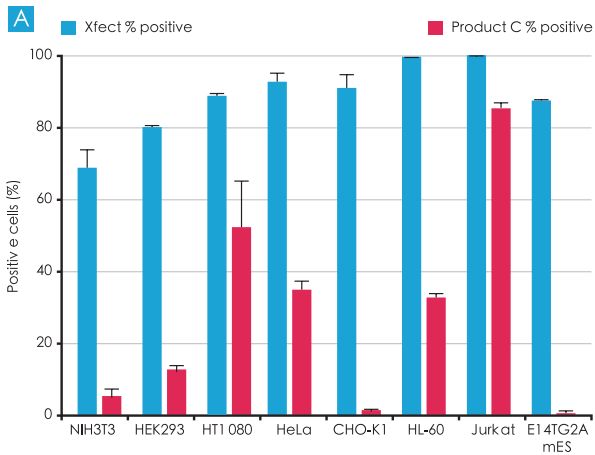
Complete induction of an early apoptosis event within 2 hours via protein transfection of active caspase-3. Apoptosis is commonly detected using annexin V-FITC staining (see Clontech's ApoAlert™ Annexin V-FITC Apoptosis Kit, Cat. No. 630109), which detects translocation of phosphatidylserine from the inner (cytoplasmic) leaflet of the plasma membrane to the outer (cell surface) leaflet soon after the induction of apoptosis. Annexin V-FITC staining is detected by flow cytometric measurement of increased fluorescence intensity. We transfected human recombinant caspase-3 using Xfect Protein Transfection Reagent and detected completion of apoptosis after just 2 hr, demonstrating that protein transfection using Xfect is both fast and delivers active protein (Panel B). In comparison, other methods for inducing apoptosis require 12 hr for completion of Annexin V staining (1).

與 Competitor 相比，能運送超過 8 倍活性的 β-gal 至細胞



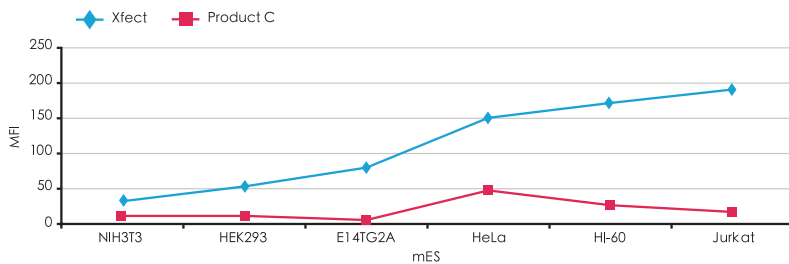
Xfect Protein Transfection Reagent delivers up to 8X more active β-galactosidase into HeLa cells than the leading competitor, Product C. Panel A. Xfect Protein Transfection Reagent or Product C was used to transfect Jurkat cells with various amount of β-galactosidase (b-gal) according to the manufacturers' recommended protocol. One hour post-transfection, the cells were assayed for b-gal activity using Clontech's Luminescent β-galactosidase Detection Kit II (Cat. No. 631712). Xfect Protein Transfection Reagent displayed a far higher signal for b-gal than did Product C. Panel B. HeLa cells transfected with 4 μg of b-gal demonstrated higher efficiency and a higher amount of b-gal protein per cell when transfection was performed with Xfect Protein Transfection Reagent (middle panel) than with Product C (righthand panel).

成功運送 Caspase-3 至細胞，並成功誘發細胞凋亡

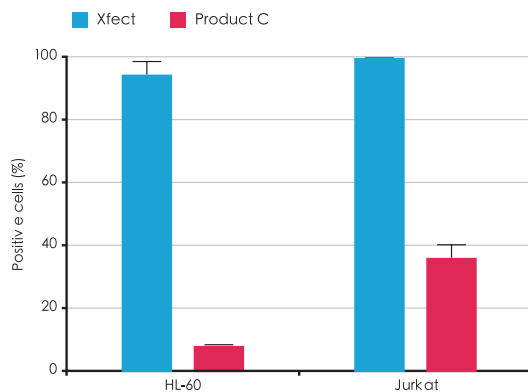


Protein transfection efficiencies across different cell lines: Xfect Protein Transfection Reagent vs. the leading competitor, Product C. Panel A. Xfect Protein Transfection Reagent yields higher transfection efficiencies than Product C across a broad range of mammalian cells, including a number of rodent and human cell lines, hard-to-transfect human suspension cells, and mouse embryonic stem cells. The cells were transfected with 4 μ g of recombinant fluorescent protein (either rAcGFP1 or rDsRed-Express) using Xfect Protein Transfection Reagent or Product C according to the manufacturers' recommended protocol. Transfection efficiency was assessed by flow cytometry one hour post-transfection. Panel B. HeLa transfected with 5 μ g of rAcGFP1 using Product C or Xfect Protein Transfection Reagent.

使用在幹細胞或懸浮細胞株上，效果明顯優於 Competitor



Xfect Protein Transfection Reagent delivers more recombinant fluorescent proteins than Product C into a range of cell types. Xfect Protein Transfection Reagent and Product C were used to transfect a number of cell lines with purified recombinant fluorescent protein (either rAcGFP1 or rDsRed-Express). In all of the cell lines tested, a far greater MFI (mean fluorescence intensity) was detected via flow cytometry after transfection with Xfect Protein Transfection Reagent than after transfection with Product C.



Xfect Transfection Reagent yields extremely high transfection efficiencies even in difficult-to-transfect human suspension cell lines such as HL-60 or Jurkat.

訂購資訊

Product Name	Catalog	Package	特價
Xfect Protein Transfection Reagent	631323	30 rxn	12,700
	631324	100 rxn	27,300

Xfect™ Protein Transfection Reagent

新品上市優惠！全面 **85** 折