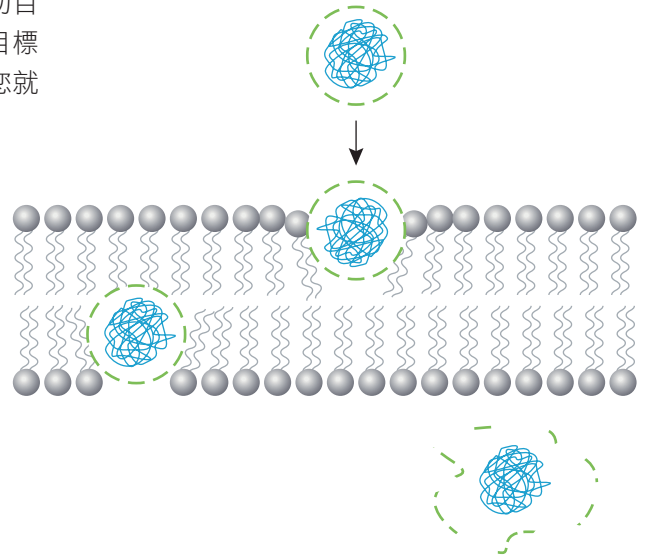


# Xfect™ Protein Transfection Reagent

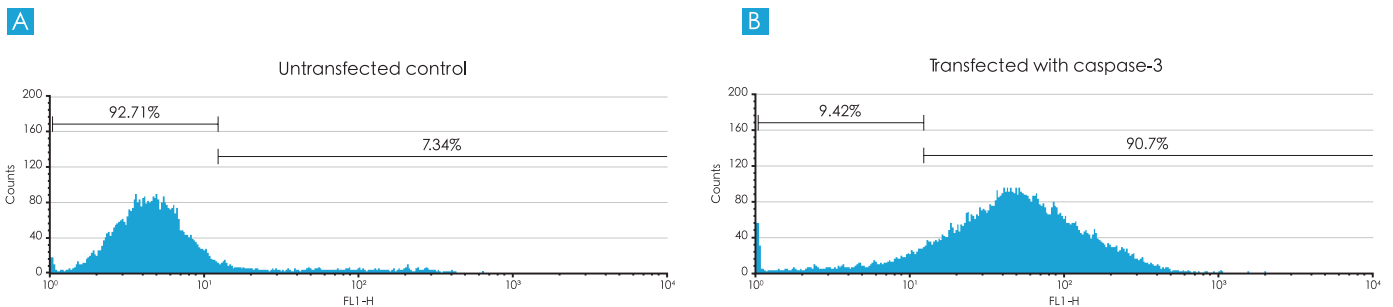
Xfect Protein 轉染試劑是一種修飾化胜肽，其特殊的氨基酸組成使它能夠與目標蛋白相互作用，而胜肽本身可穿透細胞膜，所以能協助目標蛋白跨越細胞膜屏障進入細胞內。使用方法極為簡單，只要將目標蛋白與 Xfect Protein 混合 30 分鐘後，再與細胞混合 2 小時後，您就可以測定蛋白質活性

**Xfect Protein Transfection Reagent**  
(cell-penetrating peptide)



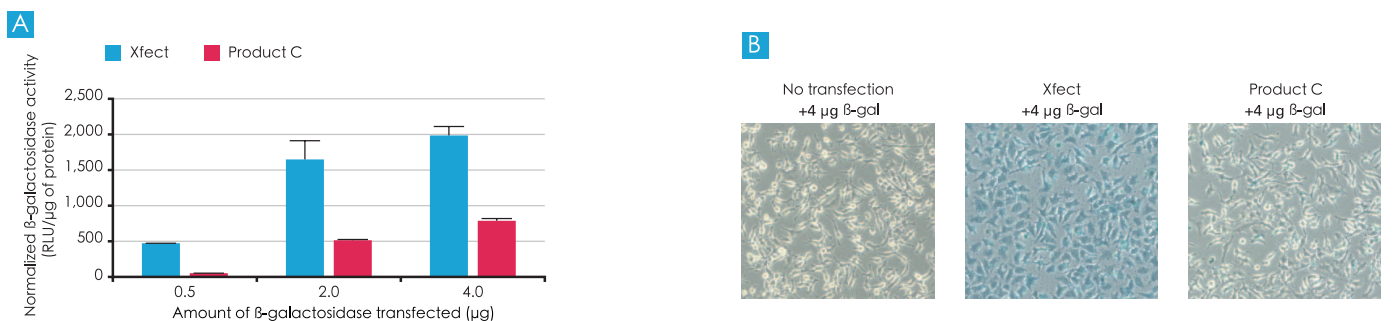
1. 能大量轉染活性蛋白
2. 非 lipofection，超低毒性
3. 蛋白質轉染效率高，就連難搞的幹細胞或血液細胞也難不倒
4. 超簡單的操作流程，2 小時就能進行分析

成功運送 Caspase-3 至細胞，並成功誘發細胞凋亡



Complete induction of an early apoptosis event within 2 hours via protein transfection of active caspase-3. Apoptosis is commonly detected using annexin V-FITC staining (see Clontech's ApoAlert™ Annexin V-FITC Apoptosis Kit, Cat. No. 630109), which detects translocation of phosphatidylserine from the inner (cytoplasmic) leaflet of the plasma membrane to the outer (cell surface) leaflet soon after the induction of apoptosis. Annexin V-FITC staining is detected by flow cytometric measurement of increased fluorescence intensity. We transfected human recombinant caspase-3 using Xfect Protein Transfection Reagent and detected completion of apoptosis after just 2 hr, demonstrating that protein transfection using Xfect is both fast and delivers active protein (Panel B). In comparison, other methods for inducing apoptosis require 12 hr for completion of Annexin V staining (1).

與 Competitor 相比，能運送超過 8 倍活性的 β-gal 至細胞



Xfect Protein Transfection Reagent delivers up to 8X more active β-galactosidase into HeLa cells than the leading competitor, Product C. Panel A. Xfect Protein Transfection Reagent or Product C was used to transfect Jurkat cells with various amount of β-galactosidase (b-gal) according to the manufacturers' recommended protocol. One hour post-transfection, the cells were assayed for b-gal activity using Clontech's Luminescent β-galactosidase Detection Kit II (Cat. No. 631712). Xfect Protein Transfection Reagent displayed a far higher signal for b-gal than did Product C. Panel B. HeLa cells transfected with 4 μg of b-gal demonstrated higher efficiency and a higher amount of b-gal protein per cell when transfection was performed with Xfect Protein Transfection Reagent (middle panel) than with Product C (righthand panel).