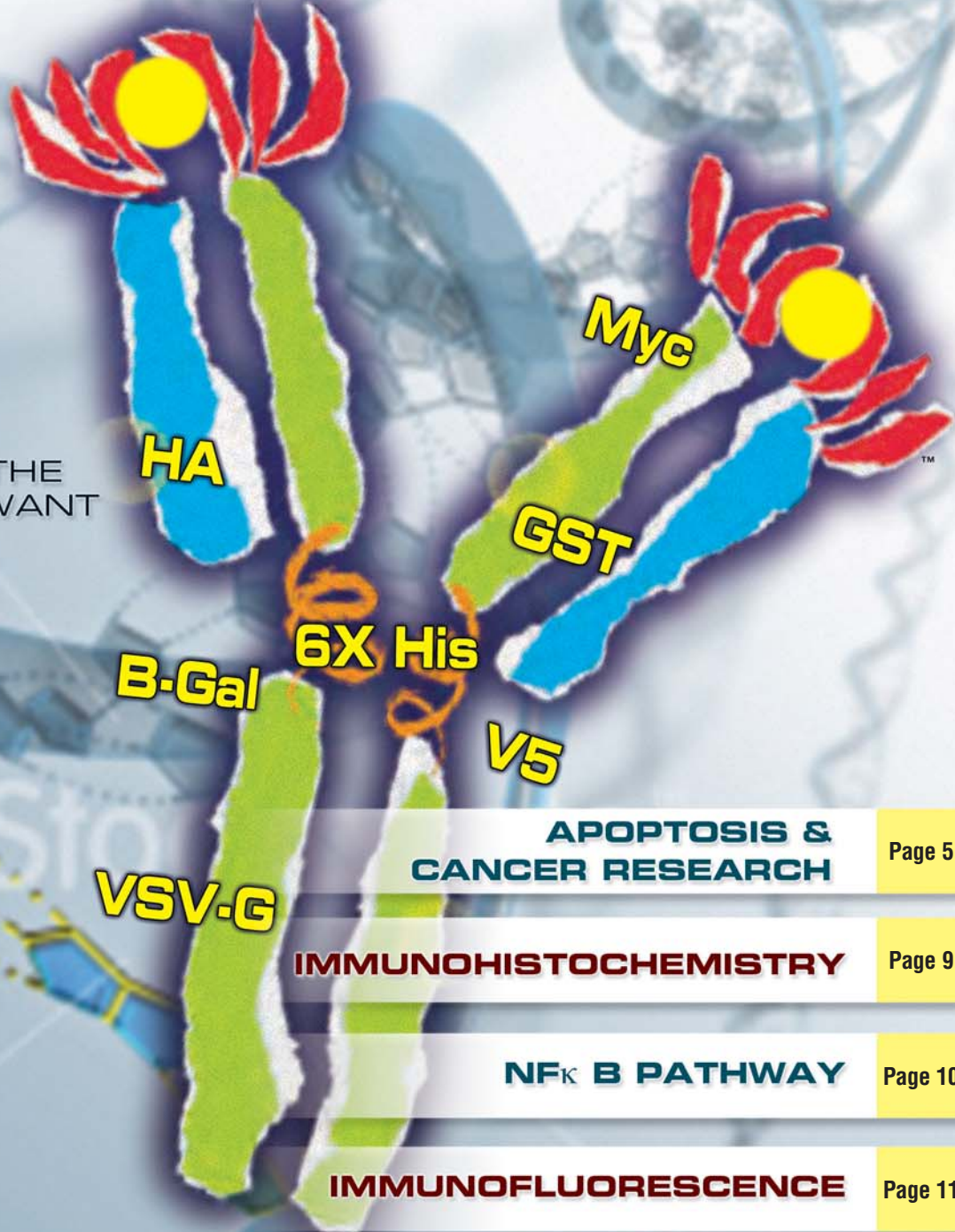


ANTIBODIES

AND ANTIBODY BASED TOOLS

To Fusion Proteins and Epitope Tags

- TRACK GENE PRODUCTS
- TRACE FLOW OF BIOLOGICAL MOLECULES
- CHARACTERIZE PROTEINS
- PROTEIN PURIFICATION
- DETECT ONLY THE PROTEIN YOU WANT



**APOPTOSIS &
CANCER RESEARCH**

Page 5

IMMUNOHISTOCHEMISTRY

Page 9

NF κ B PATHWAY

Page 10

IMMUNOFLUORESCENCE

Page 11

**NOTCH SIGNALING &
STEM CELL ANTIBODIES**

Page 15

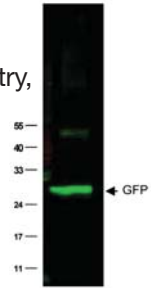
Anti-GFP (Green Fluorescent Protein)

Immunogen: Green Fluorescent Protein (GFP) fusion protein length amino acid (246aa) derived from the jellyfish *Aequorea victoria*.

Unconjugated	600-401-215	100 µg
Fluorescein	600-402-215	100 µg
Biotin	600-406-215	100 µg
Peroxidase	600-403-215	100 µg

Host: Rabbit

Applications: Western Blotting, Immunocytochemistry, Immunohistochemistry, ELISA, Immunofluorescence Microscopy, Odyssey® Infrared Imaging System



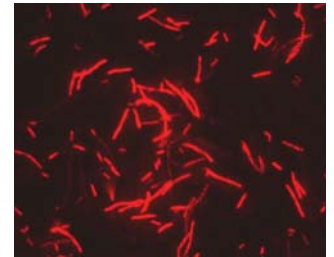
Anti-GFP (Green Fluorescent Protein)

Immunogen: Green Fluorescent Protein (GFP) fusion protein length amino acid (246aa) derived from the jellyfish *Aequorea victoria*.

Unconjugated	600-101-215	1.0 mg
Fluorescein	600-102-215	1.0 mg
Texas Red	600-109-215	1.0 mg
Rhodamine	600-100-215	1.0 mg
Biotin	600-106-215	1.0 mg
Peroxidase	600-103-215	1.0 mg
Alkaline Phosphatase	600-105-215	1.0 mg
IRDye700®	600-130-215	500 µg
IRDye800®	600-132-215	500 µg

Host: Goat

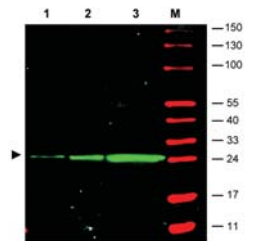
Applications: Western Blotting, Immunocytochemistry, Immunohistochemistry, ELISA, Immunofluorescence Microscopy, Odyssey® Infrared Imaging System



Anti-GFP (Green Fluorescent Protein)

Unconjugated	600-301-215	1.0 mg
Fluorescein	600-302-215	1.0 mg
Texas Red	600-309-215	1.0 mg
Biotin	600-306-215	1.0 mg
Peroxidase	600-303-215	1.0 mg
Alkaline Phosphatase	600-305-215	1.0 mg

Host: Mouse MAB



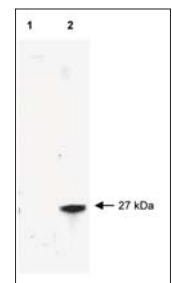
Anti-RFP (Red Fluorescent Protein)

Immunogen: Red Fluorescent Protein (RFP) full length amino acid sequence (234aa) derived from mushroom polyp coral *Discosoma*

Unconjugated	600-401-379	100 µg
Fluorescein	600-402-379	100 µg
Biotin	600-406-379	100 µg
Peroxidase	600-403-379	100 µg

Host: Rabbit

Applications: Western Blotting, Immunohistochemistry, ELISA, Odyssey® Infrared Imaging System



Anti-Beta Galactosidase

Immunogen: Beta Galactosidase (*E. coli*) Designed for screening and recovery of fusion proteins from expression systems with lacZ gene cloning sites.

Unconjugated	200-4136	10 mg
Fluorescein	200-4236	10 mg
Biotin	200-4636	10 mg
Peroxidase	200-4336	10 mg
IRDye700®	200-430-036	500 µg
IRDye800®	200-432-036	500 µg

Host: Rabbit

Applications: Western Blotting, Immunohistochemistry, ELISA, Fluorescence Microscopy, Odyssey® Infrared Imaging System



Anti-Flag for detection for FLAG™ proteins

Immunogen: Enterokinase Cleavage Site (ECS) peptide DYKDDDDK

Host: Rabbit

Applications: Western Blotting, Immunohistochemistry, ELISA, Immunofluorescence Microscopy, Odyssey® Infrared Imaging System

Unconjugated	600-401-383	250 µg
Biotin	600-406-383	100 µg
Peroxidase	600-403-383	100 µg
IRDye700®	600-430-383	100 µg
IRDye800®	600-432-383	100 µg



Anti-6X HIS

Immunogen: 6X His peptide

Host: Rabbit

Applications: Western Blotting, Immunohistochemistry, ELISA, Immunofluorescence Microscopy, Odyssey® Infrared Imaging System

Unconjugated	600-401-382	100 µg
Biotin	600-406-382	100 µg
Peroxidase	600-403-382	100 µg
IRDye700®	600-430-382	100 µg
IRDye800®	600-432-382	100 µg



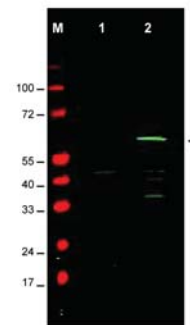
Anti-Myc

Immunogen: Myc peptide EQKLISEEDL (410-419) from human

Host: Rabbit

Applications: Western Blotting, Immunoprecipitation, ELISA, Odyssey® Infrared Imaging System

Unconjugated	600-401-381	100 µg
Biotin	600-406-381	100 µg
Peroxidase	600-403-381	100 µg
IRDye700®	600-430-381	100 µg
IRDye800®	600-432-381	100 µg



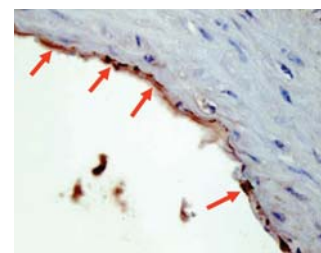
Anti-HA

Immunogen: Epitope tag peptide YPYDVPDYA (114-122) from hemagglutinin influenza

Host: Rabbit

Applications: Western Blotting, Immunohistochemistry, Immunoprecipitation, ELISA, Odyssey® Infrared Imaging System

Unconjugated	600-401-384	100 µg
Biotin	600-406-384	100 µg
Peroxidase	600-403-384	100 µg
IRDye700®	600-430-384	100 µg
IRDye800®	600-432-384	100 µg



Anti-GST (Glutathione-S-Transferase)**Immunogen:** Glutathione-S-Transferase [*Schistosoma japonicum*].**Host: Goat****Applications:** Western Blotting, Immunoprecipitation, Immunocytochemistry, Immunohistochemistry, ELISA, Immunofluorescence Microscopy, Odyssey® Infrared Imaging System

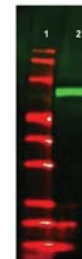
Unconjugated	600-101-200	1 mg
Fluorescein	600-102-200	1 mg
Biotin	600-106-200	1 mg
Peroxidase	600-103-200	1 mg
IRDye700®	600-130-200	500 µg
IRDye800®	600-132-200	500 µg
Agarose	200-119-200	20 mg

**Anti-GST** (Glutathione-S-Transferase)**Immunogen:** Glutathione-S-Transferase [*Schistosoma japonicum*].**Host: Mouse MAB****Applications:** Western Blotting, Immunocytochemistry, Immunohistochemistry, ELISA, Immunofluorescence Microscopy, Odyssey® Infrared Imaging System

Unconjugated	200-301-200	500 µg
Control Protein GST	000-001-200	100 µg

Anti-V5**Immunogen:** Epitope tag peptide (95-108) of the V protein from Simian parainfluenza virus 5**Host: Rabbit****Applications:** Western Blotting, Immunoprecipitation, ELISA, Odyssey® Infrared Imaging System

Unconjugated	600-401-378	100 µg
--------------	-------------	--------

**Anti-MBP** (Maltose Binding Protein)**Immunogen:** Bacterial Maltose binding protein**Host: Rabbit****Applications:** Western Blotting, Immunoprecipitation, ELISA

Unconjugated	200-401-385	1 mg
Control Protein MBP	000-001-385-1	1 mg
Control Protein MBP	000-001-385-5	5 mg

**Anti-VSV-G****Immunogen:** Epitope tag peptide (501-511) of vesicular stomatitis virus glycoprotein (VSV-G)**Host: Rabbit****Applications:** Western Blotting, Immunofluorescence Microscopy, Immunoprecipitation, ELISA

Unconjugated	600-401-386	100 µg
Biotin	600-406-386	100 µg

Anti-CAT (Chloramphenicol-Acetyl Transferase)**Immunogen:** Epitope tag peptide (46-56) of bacterial chloramphenicol acetyl transferase (CAT).**Host: Rabbit****Applications:** Western Blotting, Immunoprecipitation, ELISA

Unconjugated	100-401-463	100 µl
--------------	-------------	--------

DYE and HAPTEN

ANTIBODIES

Anti-Biotin

Host: Goat

Applications: Western Blotting, Immunocytochemistry, Immunohistochemistry, ELISA, Immunofluorescence Microscopy, Flow, Odyssey® Infrared Imaging System

Unconjugated	600-101-098	1.0 mg
Fluorescein	600-102-098	1.0 mg
Texas Red	600-109-098	1.0 mg
Rhodamine	600-100-098	1.0 mg
Phycoerythrin	600-108-098	1.0 ml
Peroxidase	600-103-098	1.0 mg
Alkaline Phosphatase	600-105-098	1.0 mg
IRDye700®	600-130-098	500 µg
IRDye800®	600-132-098	500 µg

Anti-FITC (Fluorescein)

Host: Goat

Applications: Western Blotting, Immunocytochemistry, Immunohistochemistry, ELISA, Immunofluorescence Microscopy, Flow, Odyssey® Infrared Imaging System

Unconjugated	600-101-096	1.0 mg
Texas Red	600-109-096	1.0 mg
Rhodamine	600-100-096	1.0 mg
Peroxidase	600-103-096	1.0 mg
Alkaline Phosphatase	600-105-096	1.0 mg
IRDye700®	600-130-096	500 µg
IRDye800®	600-132-096	500 µg

Anti-Luciferase (Photinus pyralis) Host: Goat

Applications: Western Blotting, Immunocytochemistry, Immunohistochemistry, ELISA, Immunofluorescence Microscopy, Flow, Odyssey® Infrared Imaging System

Unconjugated	200-101-150	50 mg
Fluorescein	200-102-150	20 mg
Biotin	200-106-150	10 mg
Peroxidase	200-103-150	20 mg
IRDye700®	200-130-150	500 µg
IRDye800®	200-131-150	500 µg

Streptavidin Conjugates

These reagents are optimized for use in fluorescent assays including immunofluorescent microscopy, flow cytometry, ELISA, Westerns, in situ hybridization (FISH), HTS/HCS

Unconjugated	S000-01	5 mg
Peroxidase	S000-03	1 mg
Alkaline Phosphatase	S000-05	1 mg
Beta Galactosidase	S000-17	1 mg
Phycoerythrin	S000-08	1 ml
Fluorescein	S000-02	1 mg
Texas Red	S000-09	1 mg
DyLight™ 488	S000-41	100 µg
DyLight™ 549	S000-42	100 µg
DyLight™ 649	S000-43	100 µg
DyLight™ 680	S000-44	100 µg
IRDye™ 800	S000-32	500µg

Buffers Molecular Biology Grade

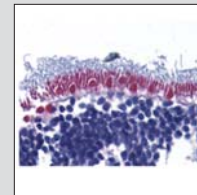
- Easy to Use - no pack, no powder
- Quality Tested
- RNase DNase Free

Water Molecular Biology Grade	MB-010-1000	1 L
Tris HCL, pH 7.4 1.0M	MB-002	1 L
Tris HCL, pH 7.6 1.0M	MB-003	1 L
Tris HCL, pH 8.0 1.0M	MB-005	1 L
TE 10X, pH 7.5	MB-006	1 L
PBS 10X, pH 7.2	MB-008	1 L
TBS 10X, pH 7.5	MB-012	1 L
EDTA pH 8.0 0.5M	MB-014	100 ml
SDS-PAGE Running Gel Buffer 10X	MB-017	1 L
Tris-Acetate-EDTA (TAE) 50X	MB-020	1 L
5.0 M Ammonium Acetate (untitrated) DEPC TREATED	MB-041	100 ml
5.0 M Potassium Acetate (untitrated) DEPC TREATED	MB-042	100 ml

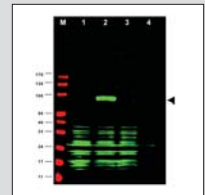
APOPTOSIS / CELL CYCLE

PRODUCT NAME	CATALOG#	HOST	APPLICATIONS	PRICE	SIZE
AIF (Apoptosis Inducing Factor)	200-401-985	Rb	IHC, WB, IP, E		100µg
Ajuba	600-401-854	Rb	WB, IP, E		100µg
Apaf1	200-301-A35	Ms	IHC, WB, IP, E		100µg
APC1 (Adenomatous Polyposis Coli Protein) S355 pan reactive	600-401-857	Rb	WB, IP, E		100µg
APC1 (Adenomatous Polyposis Coli Protein) Phospho pS355	600-401-856	Rb	WB, IP, E		100µg
APC1 (Adenomatous Polyposis Coli Protein) Phospho pS377	600-401-877	Rb	IHC, WB, IP, E		100µg
APC6 (Adenomatous Polyposis Coli Protein) Phospho pT580	600-401-876	Rb	WB, IP, E		100µg
ASPP1	600-401-A18	Rb	WB, IP, E		100µg
ASPP2	200-401-A19	Rb	WB, IP, E		100µg
ATM Protein Kinase pS1981	200-301-400	Ms	IF, WB, IP, E		100µg
ATM Protein Kinase pS1981 Biotin Conjugated	200-306-400	Ms	WB, E		100µg
ATM Protein Kinase pS1981 Fluorescein Conjugated	200-302-400	Ms	IF, FLOW		100µg
ATM Protein Kinase pS1981 Peroxidase Conjugated	200-303-400	Ms	IHC, WB, E		100µg
ATM Protein Kinase S1981	600-401-398	Rb	WB, IP, E		100µg
BACH1	600-401-458	Rb	WB, IP, E		100µg
BUB1	200-301-900	Ms	IF, WB, IP, E		100µg
BUBR1 Kinase	200-301-902	Ms	IF, WB, IP, E		100µg
CASPASE-2	600-401-412	Rb	WB, IP, E		100µg
CASPASE-12	600-401-986	Rb	IHC, WB, IP, E		100µg
cdc2 (p34)	200-301-160	Ms	IHC, WB, IP, E		100µg
cdc2 (p34)	100-401-160	Rb	WB, IP, E		100µl
CDC27 Phospho pS427	600-401-866	Rb	WB, IP, E		100µg
CDC27 Phospho pT244	600-401-885	Rb	WB, IP, E		100µg
cdk2 (Cyclin-Dependent Kinase 2)	100-401-161	Rb	WB, IP, E		100µl
cdk4 (Cyclin-Dependent Kinase 4)	100-401-162	Rb	WB, IP, E		100µl
cdk5 (Cyclin-Dependent Kinase 5)	100-401-163	Rb	WB, IP, E		100µl
cdk9 (Cyclin-Dependent Kinase 9) PITALRE	100-401-167	Rb	IHC, WB, IP, E		100µl
cdk9 (Cyclin-Dependent Kinase 9) Phospho pT29	600-401-996	Rb	WB, IP, E		100µg
CENP-E	200-301-901	Ms	IF, WB, IP, E		100µg
Cyclin A	100-401-151	Rb	WB, IP, E		100µl
Cyclin B1	100-401-152	Rb	WB, IP, E		100µl
Cyclin B1 Phospho pS126	600-401-464	Rb	WB, IP, E		100µg
Cyclin D1	100-401-153	Rb	WB, IP, E		100µl
Cyclin E	100-401-156	Rb	WB, IP, E		100µl
Cyclin E2	600-401-971	Rb	WB, IP, E		100µg
Cyclin L1 (isoform 1)	200-401-881	Rb	IHC, WB, IP, E		500µg
Cyclin L1/L2 (isoform 2)	200-401-890	Rb	IHC, WB, IP, E		500µg
Cyclin L2 (isoform 1)	600-401-878	Rb	WB, IP, E		100µg
Cyclin T1	100-401-158	Rb	IHC, WB, IP, E		100µl
Cyclin T2	100-401-931	Rb	WB, IP, E		100µl
Damage Related Autophagy Modulator	600-401-A70	Rb	WB, IP, E		100µg
DAXX	600-401-966	Rb	WB, IP, E		100µg
DR4 (Death Receptor 4)	200-401-982	Rb	IHC, WB, IP, E		100µg
E2F-1 Phospho pS364	600-401-690	Rb	IHC, WB, IP, E		100µg

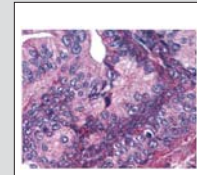
E - ELISA IF - Immunofluorescence IHC - Immunocytochemistry IP - Immunoprecipitation
N - Neutralization RIA - Radioimmunoassay WB - Western Blotting



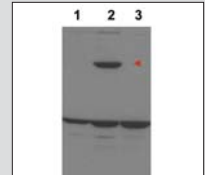
Rb anti-AIF



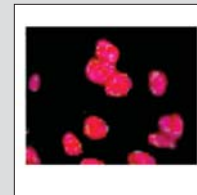
Rb anti-Ajuba



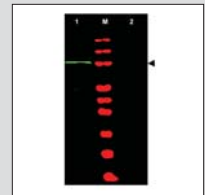
Rb anti-APC1 p5377



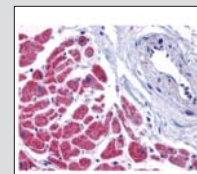
Rb anti-ASPP1



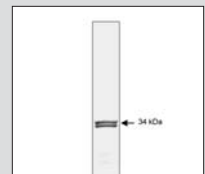
Ms anti-ATM pS1981



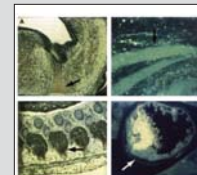
Rb anti-BACH1



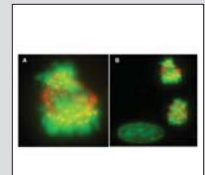
Rb anti-Caspase12



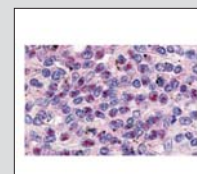
Ms anti-cdc2 (p34)



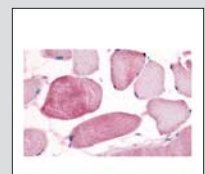
Rb anti-cdk9



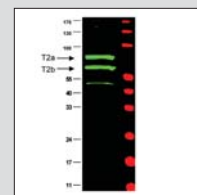
Rb anti-CENP-E



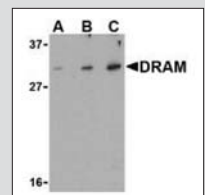
Rb anti-Cyclin L1



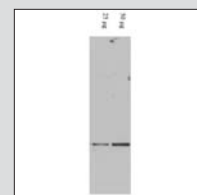
Rb anti-Cyclin L1/L2



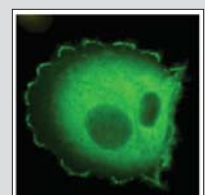
Rb anti-cyclin T2



Rb anti-DRAM



Rb anti-DAXX



Rb anti-HEF1

APOPTOSIS / CELL CYCLE

PRODUCT NAME	CATALOG#	HOST	APPLICATIONS	PRICE	SIZE
FKBP8	200-401-A58	Rb	WB, IP, E		100µg
FKBP8	200-401-A58S	Rb	WB, IP, E		25µg
FLIP alpha	200-401-983	Rb	IHC, WB, IP, E		100µg
HEF1 (aa 82-155)	200-301-904	Ms	IF, IHC, WB, IP, E		100µg
HEF1 (aa 82-398)	200-301-912	Ms	IF, IHC, WB, IP, E		100µg
HHR23B (RAD23B)	600-101-391	Gt	WB, IP, E		100µg
iASPP	600-401-926	Rb	IHC, WB, IP, E		100µg
MAD1L1	200-301-903	Ms	WB, IP, E		100µg
MAD2L1	200-301-461	Ms	WB, IP, E		100µg
MDM2	600-401-927	Rb	WB, IP, E		100µg
MDM2 Phospho pS185	600-401-423	Rb	WB, IP, E		100µg
Mer2 S.cerevisiae	600-401-925	Rb	WB, IP, E		100µg
Mer2 S.cerevisiae Phospho pS30	600-401-924	Rb	WB, IP, E		100µg
mTOR (mammalian target of rapamycin)	600-401-897	Rb	WB, IP, E		100µg
mTOR Phospho pS2448	600-401-422	Rb	IHC, WB, IP, E		100µg
p13	200-301-277	Ms	WB, IP, E		100µg
p16	100-401-170	Rb	WB, IP, E		100µl
p19 ^{ARF} (exon 1β)	200-501-892	Ms	WB, IP, E		100µg
p19 ^{ARF} (exon 2)	200-501-891	Ms	IF, WB, IP, E		100µg
p21/WAF1	200-301-171	Ms	WB, IP, E		100µg
p27	100-401-172	Rb	WB, IP, E		100µl
p130 (Rb2)	100-401-173	Rb	IHC, WB, IP, E		100µl
PCNA Alga	600-401-887	Rb	WB, IP, E		100µg
Pcdcd1 (Programmed Cell Death 1)	600-401-A72	Rb	WB, IP, E		100µg
PDL-1 (Programmed Cell Death 1 Ligand)	600-401-A71	Rb	WB, IP, E		100µg
Pcdcd4 (Programmed Cell Death 4)	600-401-965	Rb	IHC, WB, IP, E		100µg
Pcdcd4 (Programmed Cell Death 4) Phospho pS457	600-401-964	Rb	IHC, WB, IP, E		100µg
PIN 1	600-401-A20	Rb	WB, IP, E		100µg
Rad9 Yeast S1129 (pan reactive)	600-401-346	Rb	WB, IP, E		100µg
Rad9 Yeast Phospho pS1129	600-401-345	Rb	WB, IP, E		100µg
Rad9 Yeast S1260 (pan reactive)	600-401-467	Rb	WB, IP, E		100µg
Rad9 Yeast Phospho pS1260	600-401-468	Rb	WB, IP, E		100µg
RFA2 Yeast pan reactive	600-401-448	Rb	WB, IP, E		100µg
RFA2 Yeast Phospho pS122	600-401-447	Rb	WB, IP, E		100µg
RFFL	200-401-932	Rb	IHC, WB, IP, E		500µg
RNF25	600-401-969	Rb	WB, IP, E		100µg
RNF34	200-401-933	Rb	WB, IP, E		500µg
SFRP1	600-401-475	Rb	WB, IP, E		100µg
SH3BP2 Phospho pS427	600-401-449	Rb	WB, IP, E		100µg
Smac/DIABLO	100-401-244	Rb	WB, IP, E		100µl
SMC1 Phospho pS957	200-301-397	Ms	IHC, WB, IP, E		100µg
Survivin	200-401-A34	Rb	IHC, WB, IP, E		100µg
Yeast CHK1	600-401-906	Rb	WB, IP, E		100µg

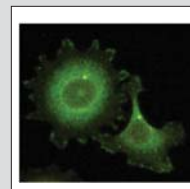
E - ELISA IF - Immunofluorescence IHC - Immunocytochemistry IP - Immunoprecipitation
N - Neutralization RIA - Radioimmunoassay WB - Western Blotting

Call 1.800.656.ROCK

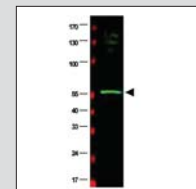
www.rockland-inc.com

Fax 610.367.7825

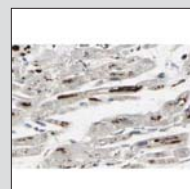
6



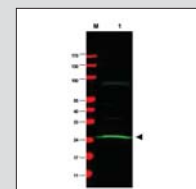
Ms anti-HEF1



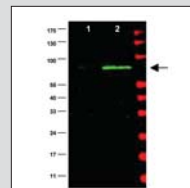
Gt anti-HR23B



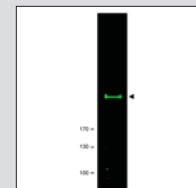
Rb anti-1ASPP



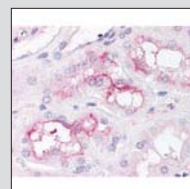
MS anti-MAD2L1



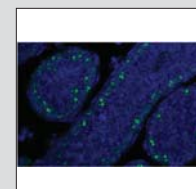
Rb anti-MDM2



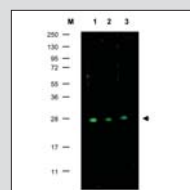
Rb anti-mTOR



Rb anti-mTOR pS2488



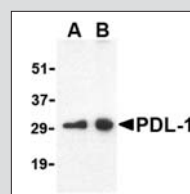
Rb anti-p19^{ARF}



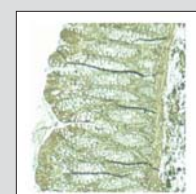
Rb anti-p27



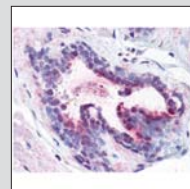
Rb anti-Rb2 (-p130)



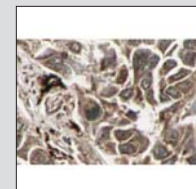
Rb anti-PDL-1



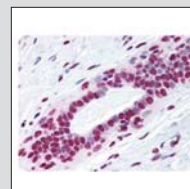
Rb anti-PDCD4



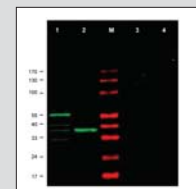
Rb anti-PDCD4 pS475



Rb anti-RFFL



Ms anti-SMC1 pS957

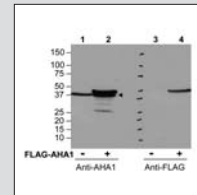


Rb anti-CHK1

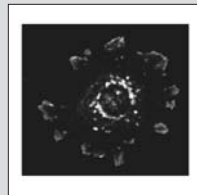
CANCER RESEARCH

PRODUCT NAME	CATALOG#	HOST	APPLICATIONS	PRICE	SIZE
ABCB1	600-401-967	Rb	WB, IP, E		100µg
ABCB6	600-401-945	Rb	WB, IP, E		100µg
Activator of Hsp90 ATPase (AHA1)	600-401-974	Rb	WB, IP, E		100µg
AGAP2 (GTP-binding and GTPase activating protein 2)	200-401-946	Rb	WB, IP, E		100µg
Ankrd26	600-401-917	Rb	WB, IP, E		100µg
APC11(C-terminal specific)	100-401-A15	Rb	WB, IP, E		100µl
APC2 (C-terminal specific)	100-401-A16	Rb	WB, IP, E		100µl
ASAP1	600-401-911	Rb	IF, WB, IP, E		100µg
ASAP1 Phospho pY782	600-401-910	Rb	IF, IHC, WB, IP, E		100µg
ASK-1 phospho specific pS83	200-401-410	Rb	WB, IP, E		200µg
Bcl-2	200-401-222	Rb	WB, IP, E		200µg
BORIS (Brother of regulator of imprinted sites)	600-401-907	Rb	IHC, WB, IP, E		100µg
CAND1 (N-terminal specific)	100-401-A11	Rb	WB, IP, E		100µl
CAND2 (C-terminal specific)	100-401-A12	Rb	WB, IP, E		100µl
CD97	200-401-908	Rb	IF, WB, IP, E		500µg
CDC20 (fizzy) (C-terminal specific)	100-401-A17	Rb	WB, IP, E		100µl
Genexin-1	600-401-A46	Rb	WB, IP, E		100µg
Genexin-1 Phospho pS796	600-401-A47	Rb	WB, IP, E		100µg
c-MET proto-oncogene tyrosine kinase Phospho pY1349 pY1356	600-401-989	Rb	WB, IP, E		100µg
c-myc	100-401-224	Rb	WB, IP, E		100µl
Cripto-1 (TDGF1)	600-401-997	Rb	WB, IP, E		100µg
Cul1 (C-terminal specific)	100-401-A01	Rb	WB, IP, E		100µl
Cul2 (C-terminal specific)	100-401-A02	Rb	WB, IP, E		100µl
Cul3 (N-terminal specific)	100-401-A03	Rb	WB, IP, E		100µl
Cul4A (N-terminal specific)	100-401-A04	Rb	WB, IP, E		100µl
Cul5 (N-terminal specific)	100-401-A05	Rb	WB, IP, E		100µl
Cul7 (C-terminal specific)	100-401-A06	Rb	WB, IP, E		100µl
Cybr	100-401-A23	Rb	WB, IP, E		100µg
Cyclin-Dependent Kinase 9 (CDK9) Phospho pT29	600-401-996	Rb	WB, IP, E		100µg
DDB1 p127 internal (Damage specific DNA binding protein 1)	100-401-A09	Rb	WB, IP, E		100µl
DDB2 p48 C-term (Damage specific DNA binding protein 2)	100-401-A10	Rb	WB, IP, E		100µl
ECT2 (Epithelial cell transforming sequence 2 oncogene) Phospho pT790	600-401-935	Rb	WB, IP, E		100µg
EGFR (Epidermal Growth Factor Receptor)	100-401-149	Rb	WB, IP, E		250µl
EGFR (Epidermal Growth Factor Receptor)	600-401-905	Rb	WB, IP, E		100µg
EGFR (Epidermal Growth Factor Receptor) Phospho pY1197	600-401-928	Rb	IHC, WB, IP, E		100µg
Gpx4 (Glutathione Peroxidase 4)	600-401-972	Rb	WB, IP, E		100µg
HALLEN	600-401-681	Rb	WB, IP, E		100µg
Heat shock protein HSP 90-alpha	600-401-929	Rb	WB, IP, E		100µg
Heat Shock Protein HSP 90-alpha acetyl specific K294	600-401-981	Rb	WB, IP, E		100µg
HER3 (Receptor Protein Tyrosine Kinase)	200-401-205	Rb	WB, IP, E		250µg
Hif-1a hydroxyP564	100-401-A25	Rb	WB, IP, E		100µl
Hsc70 (Hsp73)	200-301-A28	Ms	IHC, WB, IP, E		100µg

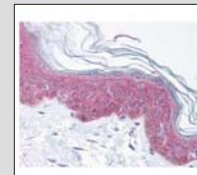
E - ELISA IF - Immunofluorescence IHC - Immunocytochemistry IP - Immunoprecipitation
N - Neutralization RIA - Radioimmunoassay WB - Western Blotting



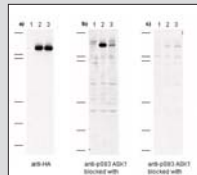
Rb anti-AHA1



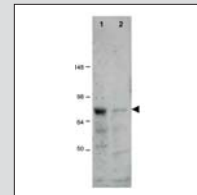
Rb anti-ASAP1



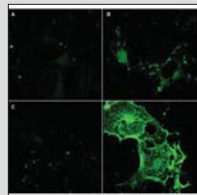
Rb anti-ASAP1 pY782



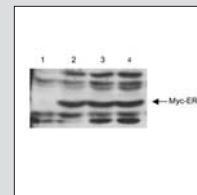
Rb anti-ASK-1 pS83



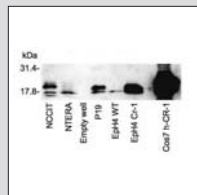
Rb anti-BORIS



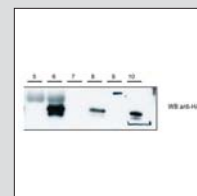
Rb anti-CD97



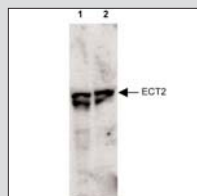
Rb anti-c-myc



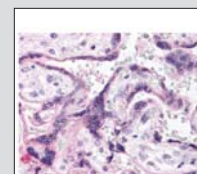
Rb anti-Cripto-1



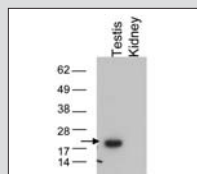
Rb anti-Cybr



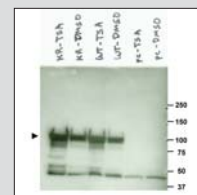
Rb anti-ECT2 pT790



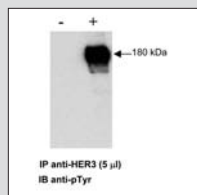
Rb anti-EGFR pY1197



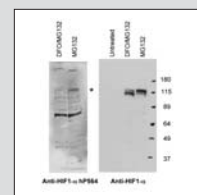
Rb anti-GPx4



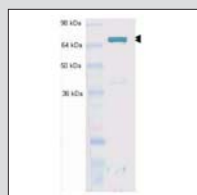
Rb anti-HSP 90



Rb anti-HER3

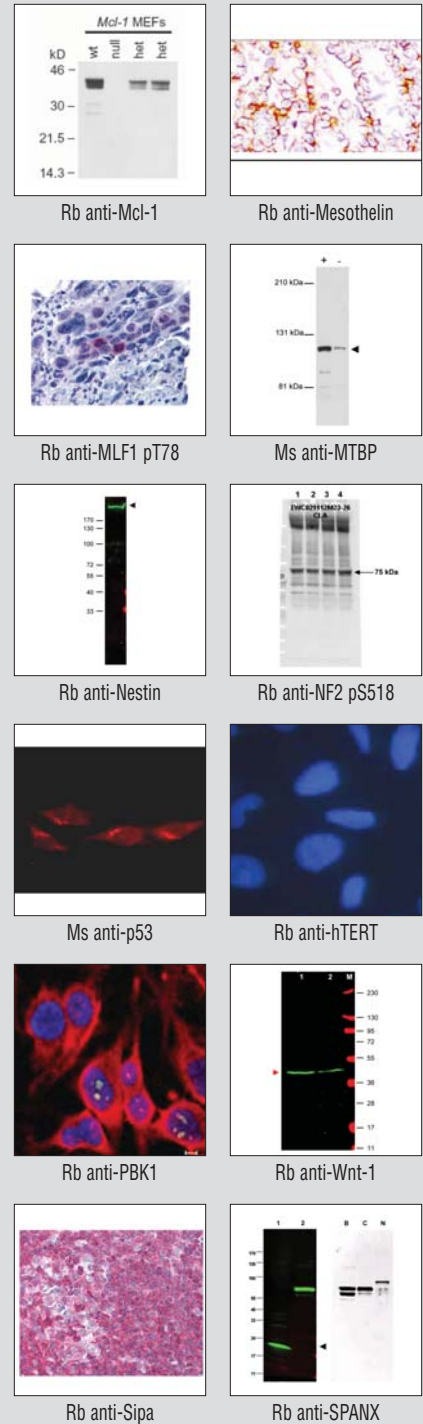


Rb anti-HIF1 P564



Rb anti-Hsc 70

PRODUCT NAME	CATALOG#	HOST	APPLICATIONS	PRICE	SIZE
Hsp70 Protein	200-301-A27	Ms	IHC, WB, IP, E		100µg
MAGP-2	600-401-937	Rb	WB, IP, E		100µg
Mcl-1	600-401-394	Rb	WB, IP, E		100µg
MECT1	600-401-936	Rb	WB, IP, E		100µg
Mesothelin (Clone MB)	200-301-A87	Ms	IHC, WB, IP, E		100µg
Mesothelin (Clone MN)	200-301-A88	Ms	IHC, WB, IP, E		100µg
MLF1 Interacting Protein Phospho pT78	600-401-930	Rb	WB, IP, E		100µg
MTBP	500-301-875	Rb	WB, IP, E		100µl
NCOA3	600-401-A40	Rb	WB, IP, E		100µg
Nestin	600-401-417	Rb	WB, IP, E		100µg
NF2 (Merlin) Phospho pS518	600-401-414	Rb	WB, IP, E		100µg
p53	200-301-174	Ms	ChIP, IF, IHC, WB, IP, E		100µg
p53 Upregulated Modulator of Apoptosis (PUMA)	600-401-987	Rb	IHC, WB, IP, E		100µg
PARC (C-terminal specific)	100-401-A07	Rb	IF, WB, IP, E		100µl
PBK1	600-401-A24	Rb	WB, IP, E		100µg
Proliferation Marker IPO-38	200-301-278	Ms	WB, IP, E		100µg
PTEN-P1 Phospho pS29/pT32	600-401-859	Rb	WB, IP, E		100µg
Rab11 Family-Interacting Protein 3	600-401-994	Rb	WB, IP, E		100µg
Rho-associated Protein Kinase-2 (ROCK-2) Phospho pY256	600-401-998	Rb	WB, IP, E		100µg
RING1B	600-101-292	Gt	WB, IP, E		100µg
ROC1 (C-terminal specific)	100-401-A13	Rb	WB, IP, E		100µl
ROC2 (C-terminal specific)	100-401-A14	Rb	WB, IP, E		100µl
Sipa1	600-401-A36	Rb	IHC, WB, IP, E		100µg
SKP1 (C-terminal specific)	100-401-A08	Rb	WB, IP, E		100µl
SPANX (pan)	600-401-916	Rb	WB, IP, E		100µg
SPANX -C	200-401-915	Rb	IHC, WB, IP, E		500µg
Telomerase catalytic subunit (hTERT)	600-401-252	Rb	IF, IHC, WB, IP, E		100µg
THYMIDYLATE SYNTHASE	100-401-199	Rb	WB, IP, E		100µl
THYMIDYLATE SYNTHASE	200-601-199	Sh	WB, IP, E		50mg
Thyroid Hormone Receptor alpha (THRA)	600-401-A38	Rb	WB, IP, E		100µg
UPLC1/ASAP3	200-401-990	Rb	WB, IP, E		100µg
Wnt-1	600-401-A37	Rb	WB, IP, E		100µg
Zic-1	200-401-159	Rb	WB, IP, E		100µg



Agarose Conjugates

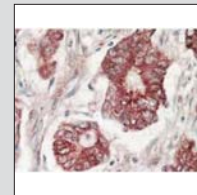
Antibody affinity gels are designed for immunoprecipitation (IP) of antigens from sera, antisera, ascitic fluid or culture fluid, bacterial and mammalian cell lysates and fusion protein preparations and are also useful for selection of immunoglobulins or removal of unwanted cross-reactivity

PRODUCT NAME	CATALOG#	HOST	PRICE	SIZE
Anti-Goat IgG	205-4150	Rb		20mg
Anti-Mouse IgG	210-1150	Gt		20mg
Anti-Rabbit IgG	211-1150	Gt		20mg
SEPHAROSE Protein A	PA50-00-0002			2.0ml
	PA50-00-0005			5.0ml
	PA50-00-0025			25ml

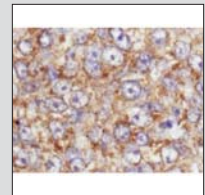
E - ELISA IF - Immunofluorescence IHC - Immunocytochemistry IP - Immunoprecipitation
N - Neutralization RIA - Radioimmunoassay WB - Western Blotting

IMMUNOHISTOCHEMISTRY

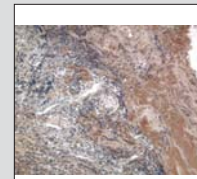
PRODUCT NAME	CATALOG#	HOST	APPLICATIONS	PRICE	SIZE
AKT (Human/Mouse/Rat /Chicken specific)	100-401-401	Rb	IHC, IF, WB, IP, E		200µl
AKT Phospho pS473	600-401-268	Rb	IHC, IF, WB, IP, E		100µg
Apolipoprotein A-1 (Human)	600-101-109	Gt	IHC, WB, E		1mg
Apolipoprotein A-1 (Mouse)	600-101-196	Gt	IHC, WB, E		1mg
Apolipoprotein B (Human)	600-101-111	Gt	IHC, WB, E		1mg
Apolipoprotein J (Human)	600-101-198	Gt	IHC, WB, E		500µg
Beta Amyloid	600-401-253	Rb	IHC, WB, E		100µg
cdk9 (PITALRE)	100-401-167	Rb	IHC, WB, IP, E		100µl
Collagen Type I	600-401-103-0.1	Rb	IHC, WB, E		100µg
Collagen Type II	600-401-104-0.1	Rb	IHC, WB, E		100µg
Collagen Type III	600-401-105-0.1	Rb	IHC, WB, E		100µg
Collagen Type IV	600-401-106-0.1	Rb	IHC, WB, E		100µg
Collagen Type V	600-401-107-0.1	Rb	IHC, WB, E		100µg
CREB Phospho pS133	600-401-270	Rb	IHC, WB, E		100µl
Gli-2 Mouse	600-401-695	Rb	IHC, WB, E		100µg
Gli-3 Human	600-401-694	Rb	IHC, WB, E		100µg
IL-6 Human	109-401-310	Rb	IHC, WB, E		1ml
Mesothelin (Clone MB)	200-301-A87	Ms	IHC, WB, E		100µg
Mesothelin (Clone MN)	200-301-A88	Ms	IHC, WB, E		100µg
MLF1 Interacting Protein Phospho pT78	600-401-930	Rb	IHC, WB, E		100µg
Myosin Light Chain Phospho pS20	600-401-416	Rb	IHC, IF, WB, IP, E		100µg
Osteopontin	100-401-404	Rb	IHC, WB, E		200µl
p130 (Rb2)	100-401-173	Rb	IHC, WB, E		100µl
Polo Kinase (Plk1) Phospho pT210	600-401-446	Rb	IHC, WB, IP, E		100µg
ROBO-1	600-401-692	Rb	IHC, WB, E		100µg
Smad3 Phospho pS423 pS425	600-401-919	Rb	IHC, WB, E		100µg
TNF alpha Human	209-401-306	Rb	IHC, WB, E		1mg



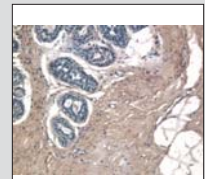
Rb anti-AKT



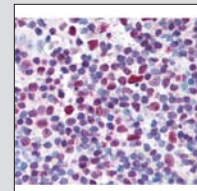
Rb anti-AKT Phospho pS473



Rb anti-Collagen Type II



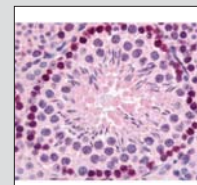
Rb anti-Collagen Type III



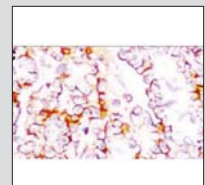
Rb anti-CREB Phospho pS133



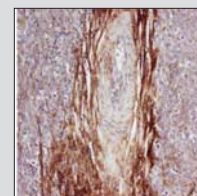
Rb anti-Dab1



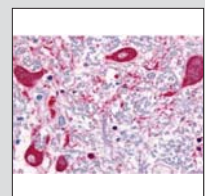
Rb anti-Gli-2 Mouse



Ms anti-Mesothelin (Clone MN)



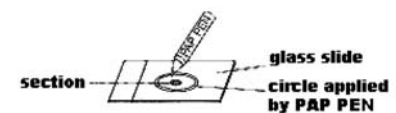
Rb anti-Osteopontin



Rb anti-ROBO-1

MaxTag™ Histo Immunochemistry Kits

The MaxTag™ Histo Kit is intended to provide a simple, reliable and convenient detection system for immunohistochemical staining to identify specific constituents in tissue sections or immobilized cells. Each kit contains all the reagents required for immunohistochemistry, including buffers and fixative. The kit employs a biotinylated, cross-absorbed, affinity purified secondary antibody to detect primary antibody-antigen complexes adhered to a glass microscope slide, followed by reaction with enhanced streptavidin peroxidase conjugate and subsequent color development using DAB substrate. The contents of the MaxTag™ Histo kit are formulated for maximum ease of use and are color coded to eliminate confusion. A sample protocol and recommended conditions for use are provided. Each kit develops at least 100 to 200 immunostains on standard microscope slides and is stable for 1 year at 4°C.



MaxTag™ Histo Anti-Human IgG Kit for Immunohistochemistry	KHA001	1 kit
MaxTag™ Histo Anti-Mouse IgG Kit for Immunohistochemistry	KHA002	1 kit
MaxTag™ Histo Anti-Rabbit IgG Kit for Immunohistochemistry	KHA003	1 kit
DAB-50 (50 tablet pack)	DAB-50	1 pack
PAP Pen	KHP001	1 pen

E - ELISA IF - Immunofluorescence IHC - Immunocytochemistry IP - Immunoprecipitation
N - Neutralization RIA - Radioimmunoassay WB - Western Blotting

NF-κB Pathway

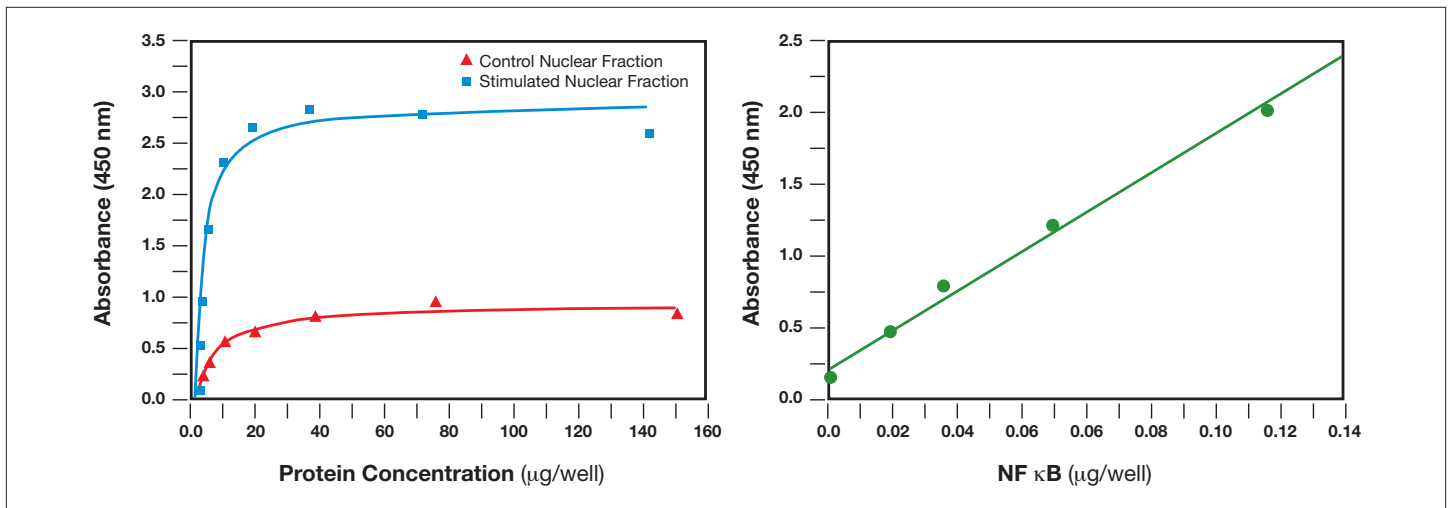
The mammalian transcription factor NF-κB regulates a wide variety of genes, including those involved in the immune response, cell growth control and apoptosis.

Rockland's NF-κB (p50 and p65) Transcription Factor Assays are a non-radioactive, sensitive method for detecting specific transcription factor DNA binding activity in nuclear extracts and whole cell lysates. A 96 well enzyme-linked immunosorbent assay (ELISA) replaces the cumbersome radioactive electrophoretic mobility shift assay (EMSA). A specific double stranded DNA (dsDNA) sequence containing the NF-κB response element is immobilized onto the bottom of wells of a 96 well plate. NF-κB contained in a nuclear extract, binds specifically to the NF-κB response element. NF-κB (p50 or p65) is detected by addition of specific primary antibody directed against NF-κB (p50 or p65). A secondary antibody conjugated to HRP is added to provide a sensitive colorimetric readout at 450 nm. The Rockland Immunochemicals' NF-κB Transcription Factor Assays will detect NF-κB (p50 or p65).



NF-κB p50 Assay will not cross-react with p65 • NF-κB p65 Assay will not cross-react with p50

Non Radioactive • Detects DNA Binding Activity • No more EMSA



Assay of NF-κB (p50) from the nuclear fraction of TNF-activated HeLa cells

Sensitivity of the NF-κB assay using purified human recombinant p50

NF-κB (P50) TRANSCRIPTION FACTOR ASSAY

Code: KAA064 \$495 Kit

NF-κB (P65) TRANSCRIPTION FACTOR ASSAY

Code: KAA065 \$495 Kit

Related Products

Product	Code	Price	Size
Anti-NFκB (p50) [Rabbit]	100-4164		100μl
Anti-NFκB (p65) (Rel A) [Rabbit]	100-4165		100μl
Anti-NFκB (p65) (Rel A) N-TERMINAL [Rabbit]	100-4165N		100μl
Anti-NFκB (p65) NLS specific [Rabbit]	600-401-271		100μg
Anti-NFκB (p65) (Rel A) pS276 [Rabbit]	100-401-264		100μl
Anti-NFκB (p65) (Rel A) pS529 [Rabbit]	100-401-266		100μl
Anti-NFκB p65 (Rel A) pS536 [Rabbit]	600-401-265		100μl
Anti-NFκB cRel [Rabbit]	100-4166		100μl


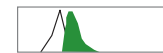
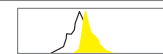
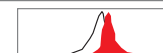


Product	Code	Price	Size
Anti-NFκB (p105) [Rabbit]	100-4184		100μl
Anti-NFκB (p52) [Rabbit]	100-4185		100μl
Anti-IκB alpha C-terminal [Rabbit]	100-4167C		100μl
Anti-IκB beta [Rabbit]	100-4186		100μl
Anti-IKK alpha [Rabbit]	100-401-219		100μl
Anti-IKK beta [Rabbit]	100-401-220		100μl
Anti-IKKe pT501 [Rabbit]	600-401-267		100μg
Anti-KB-RAS [Rabbit]	600-401-273		100μg

Fluorescent Conjugates

DyLight™ Dye the Alexa Alternative

Fluorescence Microscopy • Flow Cytometry
ELISA • Western Blot • FRET-based Assays

Table 1. Spectral Properties of DyLight Fluorescent Dyes

Emission	Fluor	Ex/Em†	See Spectra	E ^{††}	Spectrally Similar Dyes
Blue	DyLight 405	400/420		30K	Alexa 405, Cascade Blue
Green	DyLight 488	493/518		70K	Alexa 468, fluorescein, FITC
Yellow	DyLight 549	550/568		150K	Alexa 546, Alexa 555, Cy3, TRITC
Red	DyLight 633	638/658		170K	Alexa 633
Red	DyLight 649	646/674		250K	Alexa 647, Cy5
Far Red	DyLight 680	682/715		140K	Alexa 680, Cy5.5

† Excitation and emission maxima in nanometers

†† Molar extinction coefficient (M⁻¹ cm²) at the absorption maximum

General DyLight Fluorophore Highlights

- **Bright fluorescence** - high intensity emission provides outstanding sensitivity and requires less conjugate
- **Narrow emission spectra** - negligible bleed-through between fluorophore channels enables multi-color detection
- **Excellent photostability** - exceptional resistance to photobleaching enables fluorescence imaging under the most demanding conditions (e.g., structured illumination, 4PI microscopy)
- **Buffer stability** - conjugated fluorophores are completely stable at pH 4-9
- **Instrument compatibility** - excitation and emission spectra correspond with filter sets and laser settings of all popular fluorescence instrumentation (see Table 1)

Figure 1. Properties of Rockland Immunochemicals DyLight™ Fluorescent Dyes

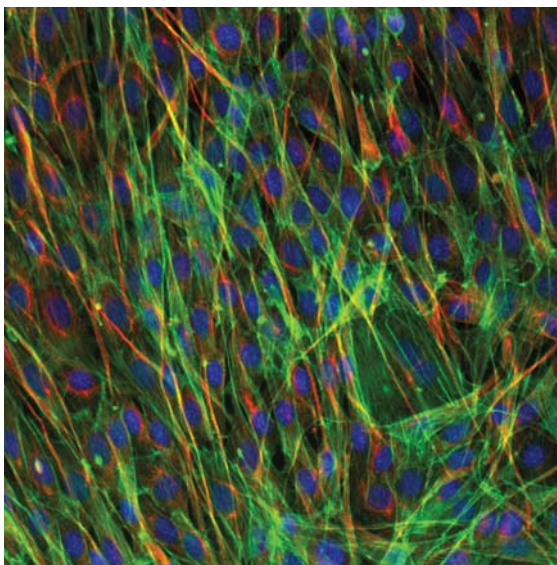


Figure 2. NIH 3T3 cells F-actin detected with DY554-Phalloidin (rendered green) Microtubules detected with anti-tubulin antibody and DyLight 649 Conjugated Goat Anti-mouse IgG (red) Nuclei detected with DAPI (blue)

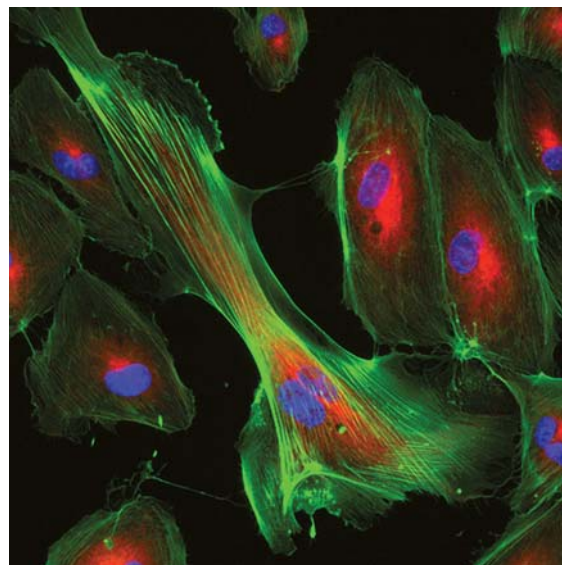


Figure 3. HMVEC-L primary endothelial cells F-actin detected with DY554-Phalloidin (rendered green) Microtubules detected with anti-tubulin antibody and DyLight 649 Conjugated Goat Anti-mouse IgG (red) Nuclei detected with DAPI (blue)



BRIGHTNESS: High fluorescence intensity provides outstanding sensitivity and requires less conjugate

PHOTOSTABILITY: Exceptional resistance to photobleaching enables fluorescence imaging under the most demanding conditions such as Structured Illumination Microscopy

Product	Host	DyLight™ 488 A=493 / E=518	DyLight™ 549 A=550 / E=568	DyLight™ 649 A=646 / E=674	DyLight™ 680 A=682 / E=715	DyLight™ 800 A=770 / E=794
Anti-Chicken IgG / IgY (H&L)	Goat	100µg 603-141-126	100µg 603-142-126	100µg 603-143-126	100µg 603-144-126	100µg 603-145-126
Anti-Goat IgG (H&L)	Donkey	100µg 605-741-125	100µg 605-742-125	100µg 605-743-125	100µg 605-744-125	100µg 605-745-125
Anti-Mouse IgG (H&L)	Donkey	100µg 610-741-124	100µg 610-742-124	100µg 610-743-124	100µg 610-744-124	100µg 610-745-124
Anti-Mouse IgG (H&L)	Goat	100µg 610-141-121	100µg 610-142-121	100µg 610-143-121	100µg 610-144-121	100µg 610-145-121
Anti-Rabbit IgG (H&L)	Donkey	100µg 611-741-127	100µg 611-742-127	100µg 611-743-127	100µg 611-744-127	100µg 611-745-127
Anti-Rabbit IgG (H&L)	Goat	100µg 611-141-122	100µg 611-142-122	100µg 611-143-122	100µg 611-144-122	100µg 611-145-122
Anti-Rat IgG (H&L)	Goat	100µg 612-141-120	100µg 612-142-120	100µg 612-143-120	100µg 612-144-120	100µg 612-145-120
STREPTAVIDIN		100µg S000-41	100µg S000-42	100µg S000-43	100µg S000-44	100µg S000-45

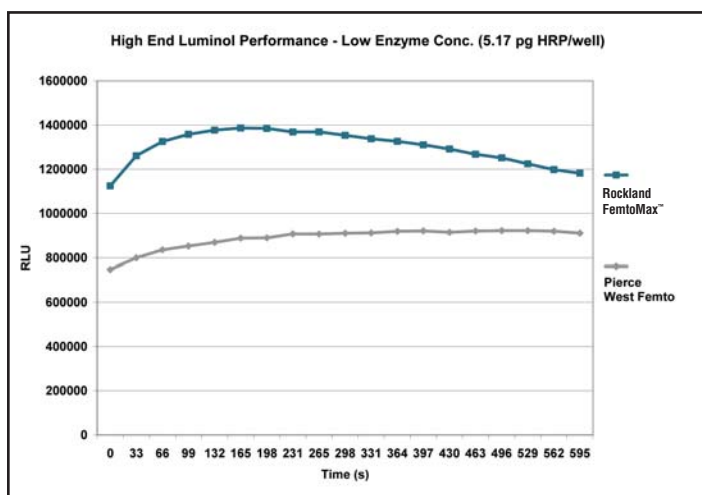
Affinity-Purified Secondary Antibodies

Product	Host	Fluorescein A=495/E=528		Biotin		IRDye®700 A=681/E=712		IRDye®800 A=778/E=806		Peroxidase	
		Price	mg	Price	mg	Price	mg	Price	mg	Price	mg
Chicken IgG (H&L) (X to Bv,Gt,GP,Ham,Hs,Hu,Hu,Ms,Rb,Rt & Sh)	Goat	1.0mg 603-102-126	1.0mg 603-106-126	0.5mg 603-130-126	0.5mg 603-132-126	1.0mg 603-103-126					
Goat IgG (H&L) (X to Ch,GP,Ham,Hs,Ms,Rb & Rt)	Donkey	1.0mg 605-702-125	1.0mg 605-706-125	0.5mg 605-730-125	\$185 / 0.5mg 605-732-125	1.0mg 605-703-125					
Goat IgG (H&L) (X to Human Serum)	Rabbit	1.0mg 605-4213	1.0mg 605-4613	0.5mg 605-430-013	0.5mg 605-432-013	1.0mg 605-4313					
Human IgG (H&L) (X to Mouse Serum)	Rabbit	2.0mg 609-4217	2.0mg 609-4617	0.5mg 609-430-017	0.5mg 609-432-017	2.0mg 609-4317					
Mouse IgG (H&L) (X to Bv,Ch,Gt,GP,Ham,Hs,Hu,Rb,Rt & Sh)	Donkey	1.0mg 610-702-124	1.0mg 610-706-124	0.5mg 610-730-124	0.5mg 610-732-124	1.0mg 610-703-124					
Mouse IgG (H&L) (Min X Bv,Ch,Gt,GP,Ham,Hs,Hu,Rb,Rt & Sh)	Goat	1.0mg 610-102-121	1.0mg 610-106-121	0.5mg 610-130-121	0.5mg 610-132-121	1.0mg 610-103-121					
Mouse IgG (H&L) (X to Human Serum)	Rabbit	2.0mg 610-4220	2.0mg 610-4620	0.5mg 610-430-020	0.5mg 610-432-020	2.0mg 610-4320					
MOUSE IgM (mu chain)	Goat	2.0mg 610-1207	2.0mg 610-1607	0.5mg 610-130-007	0.5mg 610-132-007	1.0mg 610-1307					
Rabbit IgG (H&L) (X to Bv,Ch,Gt,GP,Ham,Hs,Hu,Ms,Rt & Sh)	Donkey	1.0mg 611-702-127	1.0mg 611-706-127	0.5mg 611-730-127	0.5mg 611-732-127	1.0mg 611-703-127					
Rabbit IgG (H&L) (X to Bv,Ch,Gt,GP,Ham,Hs,Hu,Ms,Rt & Sh)	Goat	1.0mg 611-102-122	1.0mg 611-106-122	0.5mg 611-130-122	0.5mg 611-132-122	1.0mg 611-103-122					
Rabbit IgG (H&L) (X to Ch,GP,Ham,Hs,Hu,Ms,Rb & Rt)	Sheep	1.0mg 611-602-122	1.0mg 611-606-122	0.5mg 611-630-122	0.5mg 611-632-122	1.0mg 611-603-122					
Rat IgG (H&L) (X to Human Serum)	Rabbit	1.0mg 612-4226	1.0mg 612-4626	0.5mg 612-430-026	0.5mg 612-432-026	1.0mg 612-4326					
Sheep IgG (H&L) (X to Human Serum)	Rabbit	1.0mg 613-4228	1.0mg 613-4628	0.5mg 613-430-028	0.5mg 613-432-028	1.0mg 613-4328					

Blocking Buffers

Product	Code#	Size	Price
Bovine Serum Albumin (BSA) Fraction V (Immunoglobulin & Protease free)	BSA-10	10g	
30% Bovine Serum Albumin Solution	BSA-30	500 ml	
10XL PBS Fish Gel Concentrate (Azide and Mercury free)	MB066-0100	100 ml	
Infrared Imaging Blocking Solution	MB-070	500 ml	
BLOTTO	B501-0500	500g	

Chemiluminescent HRP Substrate for Microwell and/or Membrane



FemtoMax™ Super Sensitive Chemiluminescent HRP Substrate is an extremely sensitive, nonradioactive, enhanced luminol-based chemiluminescent substrate for the detection of horseradish peroxidase (HRP). FemtoMax™ is designed for both western blotting and enzyme immunoassay (EIA) use. FemtoMax™ easily allows for the detection of femtogram (10^{-15}) amounts of antigen using photographic film or other imaging methods, including highly sensitive CCD cameras.

Catalog#: FemtoMax-110 Size: 110ml

PicoMax™ Sensitive Chemiluminescent HRP Substrate is a highly sensitive, nonradioactive, enhanced luminol-based chemiluminescent substrate for the detection of horseradish peroxidase (HRP). PicoMax™ is designed for both western blotting and enzyme immunoassay (EIA) use. PicoMax™ easily allows for the detection of picogram (10^{-12}) amounts of antigen using photographic film or other imaging methods. Blots can be repeatedly exposed to X-ray film to obtain optimal results or stripped of detection reagents and re-probed.

Catalog#: PicoMax-110 Size: 110ml

Loading Control Antibodies

Anti-alpha Tubulin	(Rb)	600-401-880	200µg
Anti-beta Actin	(Rb)	600-401-886	200µg
Anti-GAPDH	(Rb)	600-401-A33	100µg
Anti-VDAC/Porin	(Rb)	600-401-882	200µg

Molecular Weight Marker (14 - 120kDa)

protein molecular weight marker is a cocktail containing seven purified proteins that range in size from 14 to 120 kDa and thus span a molecular weight range common to most proteins and protein subunits. The protein mixture has been formulated to yield well-defined bands after SDS-polyacrylamide gel electrophoresis and staining with Coomassie blue or other common staining techniques. The intensity of the 67 kDa bovine albumin band has been increased to serve as a reference. The product is supplied in 1X loading buffer and is ready-to-use.

kDa	Protein
120	β - Galactosidase
97	Phosphorylase B
67	Bovine Albumin
45	Ovalbumin
30	Carbonic Anhydrase
18	Myoglobin
14	Cytochrome C

4-20% Tris-Glycine SDS-PAGE
Stained with Coomassie Blue

MB-201-0200	1 x 200µl
MB-201-1000	5 x 200µl
MB-201-2000	10 x 200µl

Lysates

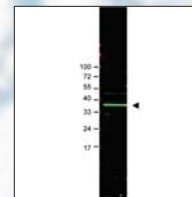
Western Blotting positive controls. Each vial contains 500ug of protein in 500 ul (except as noted). Lysate is in 1X SDS PAGE Sample Buffer. All lysates are tested by SDS-PAGE using 4-20% gradient gels using antibodies to key signaling components to confirm the presence of both high molecular weight and low molecular weight proteins.

293	Whole Cell Lysate	W09-000-365	500µg
A431	Whole Cell Lysate	W09-000-361	500µg
A431	Whole Cell Lysate EGF Stimulated	W09-000-362	500µg
A549	Whole Cell Lysate	W09-001-372	500µg
CHO/K1	Whole Cell Lysate	W07-000-359	500µg
HeLa	Whole Cell Lysate	W09-000-364	500µg
HeLa	Nuclear Extract	W09-001-367	200µg
Hep2	Whole Cell Lysate	W09-000-363	500µg
Jurkat	Whole Cell Lysate	W09-001-370	500µg
MCF-7	Whole Cell Lysate	W09-000-360	500µg
NIH/3T3	Whole Cell Lysate	W10-000-358	500µg

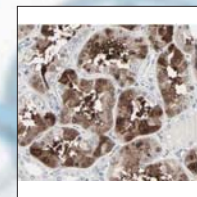
Trademark Index

MaxTag is a trademark of ROCKLAND IMMUNOCHEMICALS, Inc.
FemtoMax is a trademark of ROCKLAND IMMUNOCHEMICALS, Inc.
PicoMax is a trademark of ROCKLAND IMMUNOCHEMICALS, Inc.
Alexa and Cascade Blue are trademarks of Invitrogen
Cy is a trademark of GE Healthcare
DyLight is a trademark of Thermo Fisher Scientific Inc. and its subsidiaries
IRDye is a trademark of LI-COR Biosciences.
Odyssey is a trademark of LI-COR Biosciences.

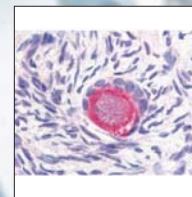
PRODUCT NAME	CATALOG#	HOST	APPLICATIONS	SIZE	PRICE
Anti-ADAM10	200-401-949	Rb	IHC, WB, E	100µg	
Anti-Bmi1	600-101-392	Gt	WB, E	100µg	
Anti-cbl-c	600-401-889	Rb	IHC, WB, IP, E	100µg	
Anti-DELTA-1	600-401-858	Rb	WB, E	100µg	
Anti-DELTA-4	600-401-696	Rb	IHC, WB, IP, E	100µg	
Anti-HDAC-1	600-401-879	Rb	IHC, WB, IP, E	100µg	
Anti-Human HSP27	200-301-243	Ms	WB, E	100µg	
Anti-Jagged-1	200-401-698	Rb	IF, IHC, WB, IP, E	500µg	
Anti-Jagged-2	600-401-852	Rb	WB, E	100µg	
Anti-Mouse Leptin	210-401-320	Rb	WB, E	1mg	
Anti-Myosin Light Chain pS20	600-401-416	Rb	IHC, WB, IP, E	100µg	
Anti-Nestin	600-401-417	Rb	WB, IP, E	100µg	
Anti-NOTCH 1 (Cleaved N terminal)	100-401-407	Rb	WB, IP, E	200µl	
Anti-NOTCH 1 (intra) (Human specific)	100-401-405	Rb	WB, IP, E	200µl	
Anti-NOTCH 2 (Cleaved N terminal)	100-401-408	Rb	WB, IP, E	200µl	
Anti-NOTCH 2 (intra)	100-401-406	Rb	WB, IP, E	200µl	
Anti-PPAR alpha (N-terminal specific)	600-401-421	Rb	WB, IP, E	100µg	
Anti-PPAR delta (internal)	600-401-420	Rb	WB, IP, E	100µg	
Anti-Smad3 (Rabbit)	600-401-920	Rb	IHC, WB, IP, E	100µg	
Anti-Smad3 pS423 pS425	600-401-919	Rb	IHC, WB, IP, E	100µg	
Anti-TGF beta 1 specific	600-401-432	Rb	WB, IP, E	100µg	
Anti-UBIQUITIN	200-401-431	Rb	WB, IP, E	500µg	
Anti-Wnt1	600-401-A37	Rb	WB, IP, E	100µg	



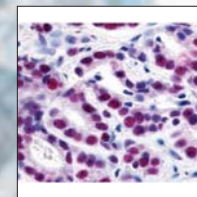
Gt anti-Anti-Bmi1



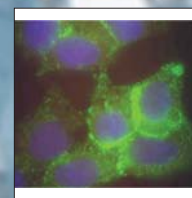
Rb anti-Anti-cbl-c



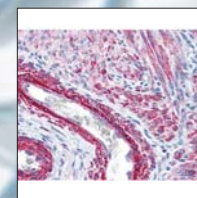
Rb anti-DELTA-4



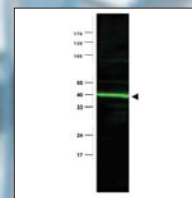
Rb anti-HDAC-1



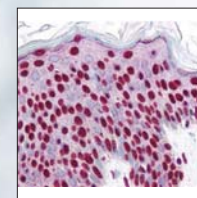
Ms anti-Human HSP27



Rb anti-Myosin Light Chain pS20



Rb anti-Anti-PPAR alpha



Rb anti-Smad3 pS423 pS425

Cancer Research • Epitope Tag NFκB Pathway • Histochemistry • Fluorescence

**Nuppulinnan
laboratoriopalvelu Oy**
Aholan palstatie 57
05430 Nuppulinna
Finland
Phone 35 8207 9203 50
Fax 35 82079203 51
www.nuppulinnanlaboratoriopalvelu.fi

Australia
Jomar Bioscience PTY LTD
15 Maesbury Street
Kensington, SA 5068
Australia
Phone: (08) 8431 2041
Fax: (08) 8431 2049
E-mail: jomar@adelaide.on.net
www.jomar.on.net

Denmark
MEDINOVA Scientific A/S
Produktionsvej 26
DK-2600 GLOSTRUP
Phone: + 45 39 56 20 00
Fax: + 45 39 56 19 42
E-mail: edinova@medinova.dk
www.medinova.dk

South Korea
BMS Bio-Medical Science
Co.,Ltd.
BMS Bldg., 829-1
Yeoksam-dong
Gangnam-ku, Seoul, 135-936
South Korea
Phone: (82) 2 3471 6500
Fax: (82) 2 3471 7001
E-mail: info@bmskorea.co.kr
www.bmskorea.co.kr

Sweden
In vitro Sweden AB
Box 21160
S-100 31 STOCKHOLM
Sweden
Phone: (46) 8 30 60 10
Fax: (46) 8 30 60 15
E-mail: iv@invitro.se
www.invitro.se

Brazil
BIOGENETIX
Rua Dr Quirino,
388 Bosque Campinas
SP,13015-080
Brazil
Phone: 5519 3734 5050
E-mail:
comercial@biogenetix.com.br
www.biogenetix.com.br

Finland
Nuppulinnan
laboratoriopalvelu Oy
Aholan palstatie 57
05430 Nuppulinna, Finland
Phone: 35 8207 9203 50
Fax: 35 8207 9203 51
E-mail: nuppulinna@dlc.fi
www.nuppulinnanlaboratoriopalvelu.fi

Singapore
SciMed (Asia) Pte. Ltd.
196 Pandan Loop #07-11
Pantech Industrial Complex
Singapore 128384
Phone: (65) 779 3388
Fax: (65) 266 3086
Email:
scimed@singnet.com.sg
www.scimed.com.sg

Switzerland
BioConcept
Gewerbestr. 14
Postfach 427
CH - 4123 Allschwil 1
Phone: +41 61 486 80 80
Fax: +41 61 486 80 00
E-mail: info@bioconcept.ch
www.bioconcept.ch

China
Genetimes Technology Inc.
Shanghai Office
(Headquarters)
2th Floor, No. 15 ,
Qinjiang RD.
Shanghai, P.R.China 200033
Phone: 86-21-54262677
Fax: 86-21-64398855
E-mail:
order@genetimes.com.cn
www.genetimes.com.cn

Israel
Origolab Ltd.
P.O.B. 7197
Jerusalem 91071
Israel
Phone: 972-2-5669285
Fax: 972-2-5612120
E-mail:
origolab@netmedia.net.il

South Africa
Biocom
PO Box 13004
Clubview, 0014
South Africa
Phone: +27 12 654 4614
Fax: +27 86 654 9048
(SA only)
E-mail: biocom@telkomsa.net
Website:
www.biocombiotech.co.za

Taiwan
Unimed Healthcare Inc.
3F, No. 74, Song-Te Rd.,
Taipei, 11022
R.O.C. Taiwan
Phone: 886-2-27202215
Fax: 886-2-27233666
E-mail: unimed@ms1.hinet.net
www.unimed.com.tw